

## Gloss Finishes

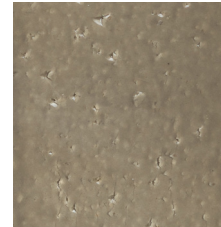
 = Stock Colors



Cottonvue  (Actual Glazed Thin Brick Size)



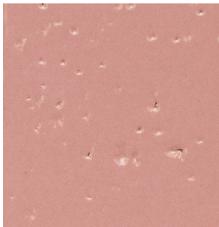
Almondvue



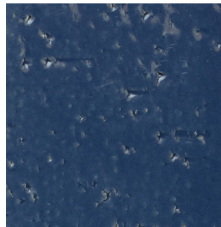
Oatvue



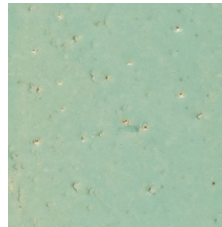
Powdervue



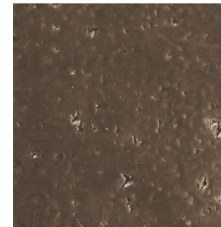
Panthervue



Aquavue 



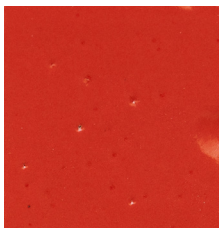
Junipervue



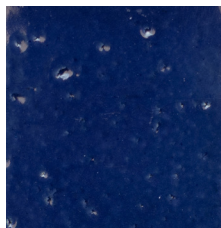
Dawnvue



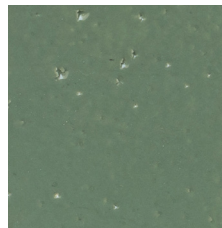
Sunvue



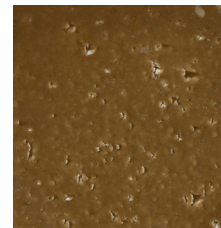
Orchidvue



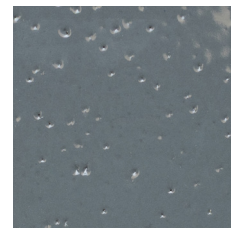
Oceanvue



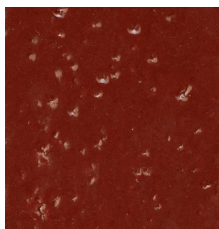
Basilvue



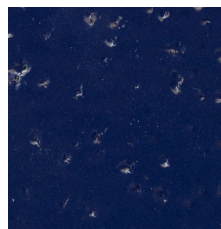
Fawnvue



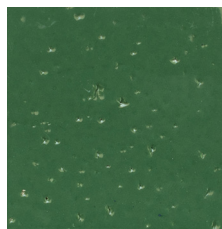
Pitchvue



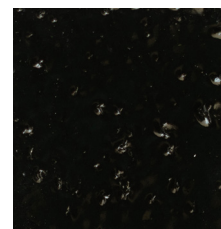
Currantvue



Admiralvue



Pinevue

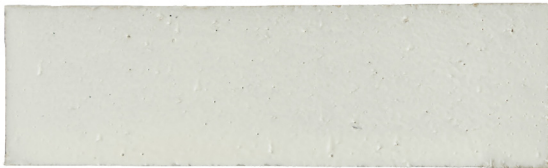


Inkvue 

PLEASE NOTE: Photo samples are intended to represent general color range and texture. Precise color fidelity is difficult to obtain in print. Brick selection should be made from product samples.

## Matte Finishes

 = Stock Colors



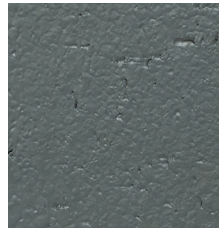
Canyonvue (Actual Glazed Thin Brick Size)



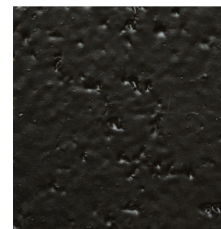
Driftvue 



Castlevue



Spacevue



Alleyue 

**A Gloss Glaze** adds a polished, reflective finish to your brick, designed to enhance their color depth. This smooth, high-shine coating not only elevates the aesthetic appeal but also provides extra durability and protection, making it perfect for a sleek, modern look.

**A Matte Glaze** offers a soft, velvety finish with a refined, understated elegance. This nonreflective surface enhances the natural beauty of the brick. Available in five earth tone colors, these brick are subtle, versatile, and perfect for creating a timeless, serene atmosphere in any setting.

MODULAR SIZE Flats - 2-1/4" x 7-5/8" x 9/16"   Corners - 2-1/4" x 7-5/8" x 9/16" x 3-5/8"									
Shape	SF/Tray	LF/Tray	Pcs/Tray	lbs/Tray	Trays/Pallet	SF/Pallet	LF/PalletP	cs/Palletl	bs/Pallet
Flats	3.50		24	20lbs	120	420		2,880	2,400
Corners		2.63	12	14lbs	120		315	1,440	1,680

**Minimum Order Quantities: Flats 2,880 pcs. | Corners 48 pcs. | Edge Caps 50 pcs.**

Available in Tumbled Texture! Contact your distributor for details.

PLEASE NOTE: Photo samples are intended to represent general color range and texture. Precise color fidelity is difficult to obtain in print. Brick selection should be made from product samples.