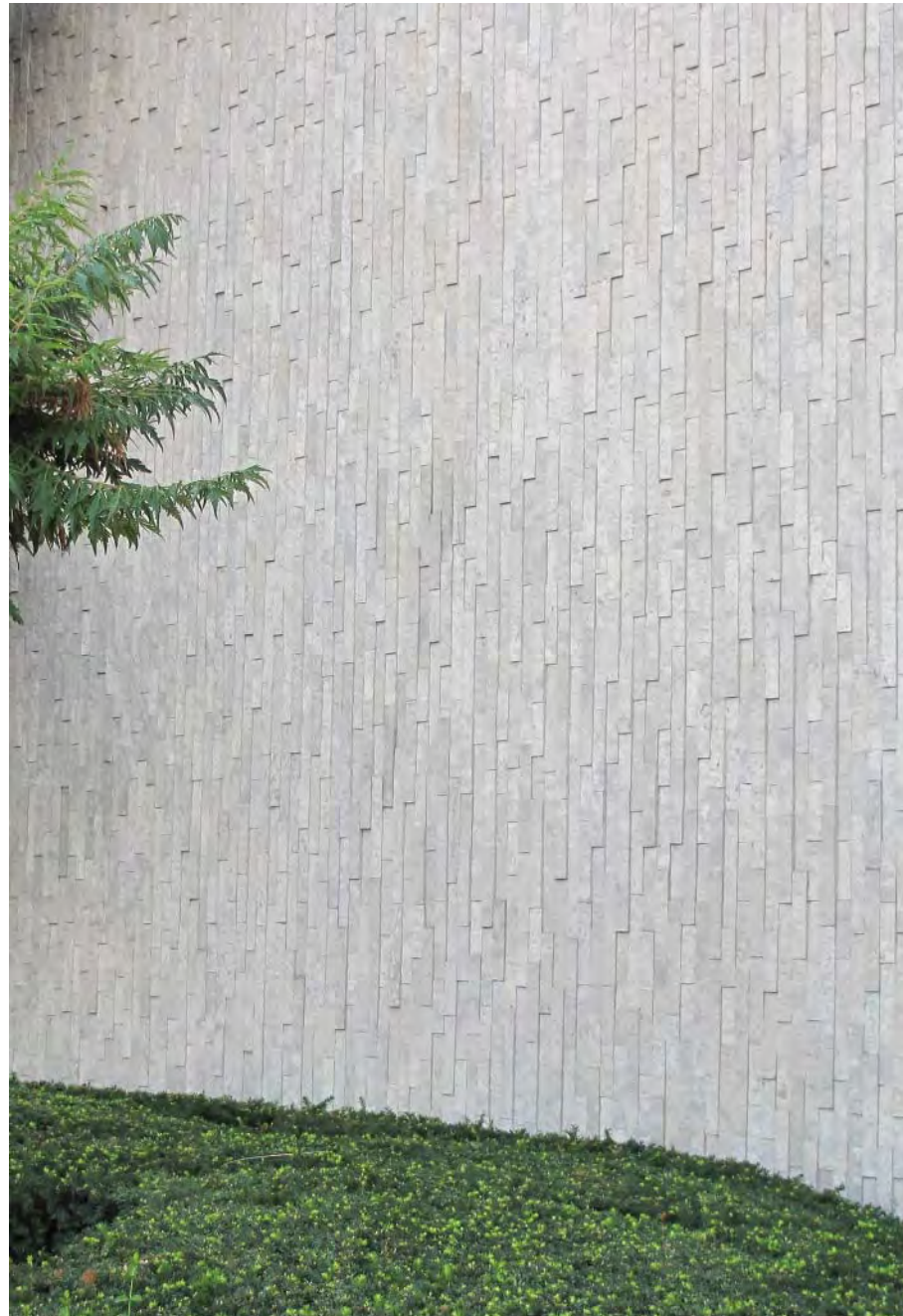


# Adair<sup>®</sup> Marble Overlay

The best designs begin  
with the finest materials.

A unique look for Arriscraft, Adair<sup>®</sup> Marble Overlay features the beauty and durability of quarried stone, cut into easy to install thin units. The timeless dry-stack design can be used in a variety of styles and configurations.

Adair<sup>®</sup> Marble Overlay is suitable for use in adhered tile installations for both interior and exterior applications. This distinctive stone adds elegance to residential, commercial and institutional building projects.



# Adair<sup>®</sup> Marble Overlay

## Design options

The slender, random length units of Adair<sup>®</sup> Marble Overlay allow for ultimate customization. Laid in a horizontal or vertical direction, this stone is certain to look distinctive and striking.

## Installation

Adair<sup>®</sup> Marble Overlay is adhered to a suitable solid substrate, and is installed with dry joints between units, meaning there is no mortar used in the joints. For Installation details, refer to the Adair<sup>®</sup> Marble Overlay DATA Sheet.

## Specifications

Adair<sup>®</sup> Marble Overlay is available in the following standard size:

Height: 2-1/8"

Length: Random (4" to 23-5/8")

Bed Depth: Random (5/8" to 1-1/4")

Available in 5 sq. ft. boxes, or 100 sq. ft. skids.

As a naturally occurring material, Adair<sup>®</sup> Marble Overlay is subject to variations in color and pattern. These unique characteristics add beauty and character.

