



PRODUCT DESCRIPTION

“Real Strong, Real Safe, Real Sustainable, Real Smart.” Endurance RS4 Structural Brick is safer, stronger, more energy efficient and sustainable, and is designed for structural longevity. This product eliminates the need for load-bearing wood or steel framing and is suitable for any type of foundation, withstands higher loads and meets seismic requirements. It is an ideal solution for homes, especially in areas prone to high winds, tornadoes, and earthquakes. It is also recommended for commercial or government buildings such as hospitals, schools, courthouses, and police stations.

PROVEN WALL SYSTEM

Larger engineering and utility size bricks have been used for reinforced masonry for years. Endurance RS4 uses this same proven engineering, but adds a more pleasing and practical scale. Additional proven wall provided are:

- Eliminates the need for wood or steel framing
- Applicable with standard doors and windows
- Applicable with any type of foundation
- No new skills needed for construction
- Creates more floor space per dollar spent
- Early “curb appeal” for faster resale
- Meets all seismic requirements
- Can withstand higher loads

THERMAL MASS PROPERTIES

Endurance wall systems can be used in conjunction with any type of interior wall construction (e.g. furring strips, non-load bearing metal studs, hat channel, etc.) and insulation systems. With its continuous rigid insulation, thermal bridging is reduced, making Endurance one of the most energy efficient building materials in the industry.

FIRE RESISTANCE RATINGS

Fire resistance ratings for Endurance are based on the equivalent thickness of the unit and Table 722.4.1 (1) of the International Building Code (IEC) 2013 Edition. The results are as follows:

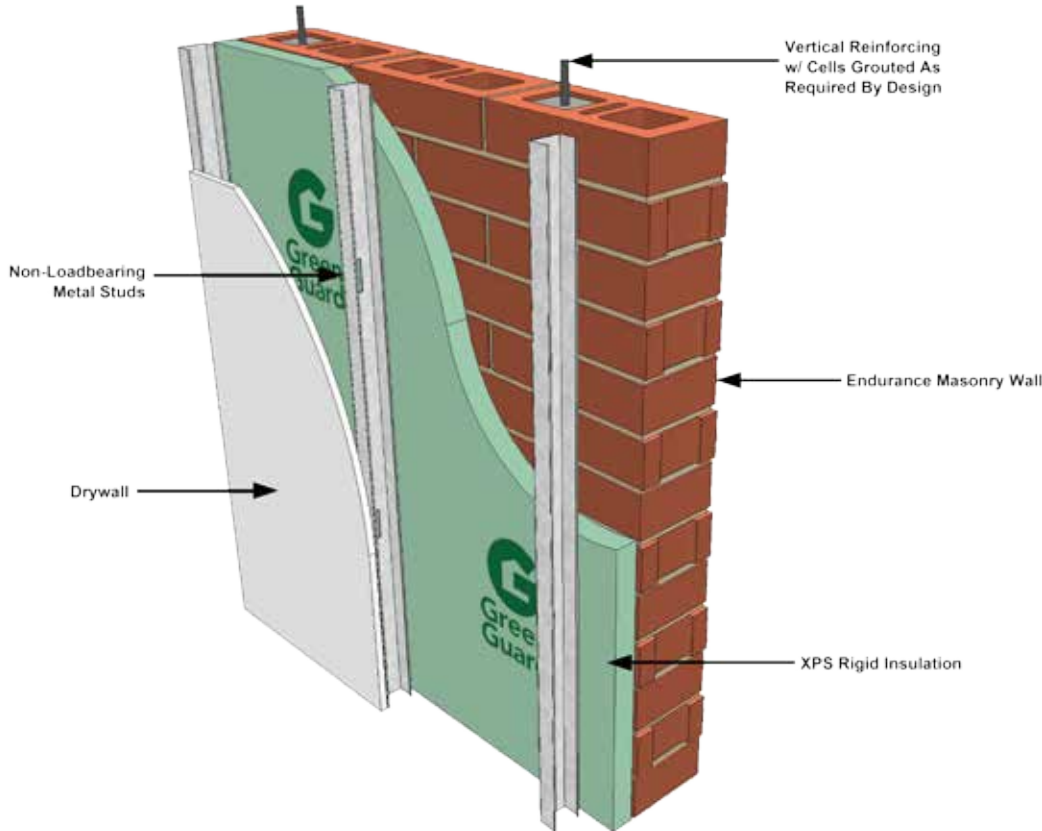
<u>Configuration</u>	<u>Equivalent Thickness</u>	<u>Fire Resistance Period</u>
Hollow Unit	3.93 inches	2 hours
Unit filled with solid grout, perlite or vermiculite	5.625 inches	3 hours

ENDURANCE RS4™ STRUCTURAL BRICK

BUILD WITH ULTIMATE EFFICIENCY

ONE WALL ADVANTAGE

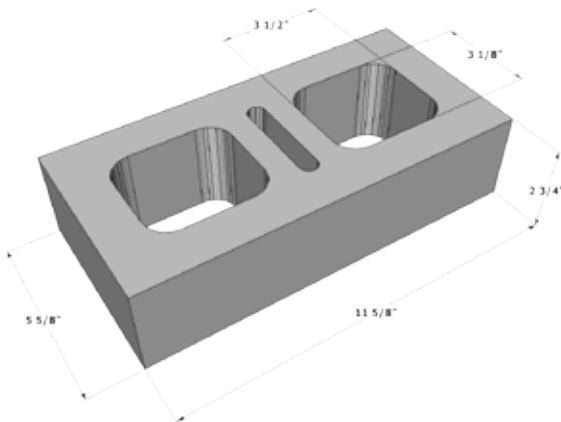
The featured diagram demonstrates an interior wall treatment using Endurance Structural Brick combined with continuous insulation. This combination dramatically increases the structures energy efficiency while decreasing the overall cost of construction by building one exterior wall rather than two.



UNIT SIZE & SPECIFICATIONS

Endurance units comply with ASTM C652, Type HBS Class 40V, Grade SW and are manufactured in a variety of colors. It is available in a standard unit size measuring 2³/₄"H x 11⁵/₈"L x 5⁵/₈"D and a bond beam unit.

Standard Unit



V Bond Beam Unit

