



Product Selection Catalog



Snap for more information.

Arriscraft 
Building Stone · Brick · Limestone

www.laticrete.com/mvis



Warranty Information.....	3
Arris® tile Features and Profiles	4 – 5
LATICRETE MVIS Details.....	6 – 7
Air and Water Barrier/Waterproofing Systems	
LATICRETE Air & Water Barrier.....	9
LATAPOXY® Waterproof Flashing Mortar.....	9
Polymer Fortified Masonry Veneer Mortar	
LATICRETE Hi-Bond Masonry Veneer Mortar.....	10
LATICRETE Hi-Bond Rapid Masonry Veneer Mortar.....	10
LATICRETE Masonry Veneer Mortar.....	11

Thick Bed/Specialty Mortar

LATICRETE Premium Mortar Bed	11
------------------------------------	----

Epoxy Adhesive

LATAPOXY 310 Stone Adhesive.....	12
LATAPOXY 310 Cordless Mixer.....	12
LATAPOXY 310 Cordless Mixer Nozzles.....	12

Sealant

LATICRETE Latasil™	13
--------------------------	----

Pointing Mortar and Sealant Color Chart.....	14
--	----

LATICRETE offers the best warranties IN THE INDUSTRY



LATICRETE 15 Year System Warranty* – SPD For Steel or Wood Framed Exterior Facades

See Data Sheet 230.15SPD for complete warranty information.

APPLICATION	PRODUCTS
Air and Water Barrier/Waterproofing Systems	LATICRETE® Air & Water Barrier LATAPOXY® Waterproof Flashing Mortar
Scratch and Brown Plaster Coats	LATICRETE Premium Mortar Bed
Thin Bed	LATICRETE Hi-Bond Masonry Veneer Mortar LATICRETE Masonry Veneer Mortar
Pointing/Grouting	LATICRETE Premium Masonry Pointing Mortar LATICRETE Masonry Pointing Mortar
Sealant†	LATICRETE Latasil™

LATICRETE 25 Year System Warranty** – SPD

See Data Sheet 025.0SPD for complete warranty information.

APPLICATION	PRODUCTS
Air and Water Barrier/Waterproofing Systems	LATICRETE Air & Water Barrier LATAPOXY Waterproof Flashing Mortar
Scratch and Brown Plaster Coats	LATICRETE Premium Mortar Bed
Thin Bed	LATICRETE Hi-Bond Masonry Veneer Mortar LATICRETE Masonry Veneer Mortar
Pointing/Grouting	LATICRETE Premium Masonry Pointing Mortar LATICRETE Masonry Pointing Mortar
Sealant†	LATICRETE Latasil LATICRETE Latasil 9118 Primer

NOTES:

† Use of suitable flexible sealant is required per Tile Council of America Detail EJ171 for use in expansion joints, covers, corners, changes in plane and other joints or wherever tile or stone abuts dissimilar materials or restraining surfaces.

* See Data Sheet 230.15SPD for complete warranty information.

** See Data Sheet 025.0SPD for complete warranty information.

ARRIS■tile

ARRIS■tile Renaissance® Units have become a favorite both for classic interior designs and for exterior applications in warm southern climates. ARRIS■tile Renaissance® Units can be adhered to suitable solid substrates. Developed for vertical wall applications, ARRIS■tile Renaissance® Units may be site cut, trimmed and finished to custom lengths, shapes or sizes.

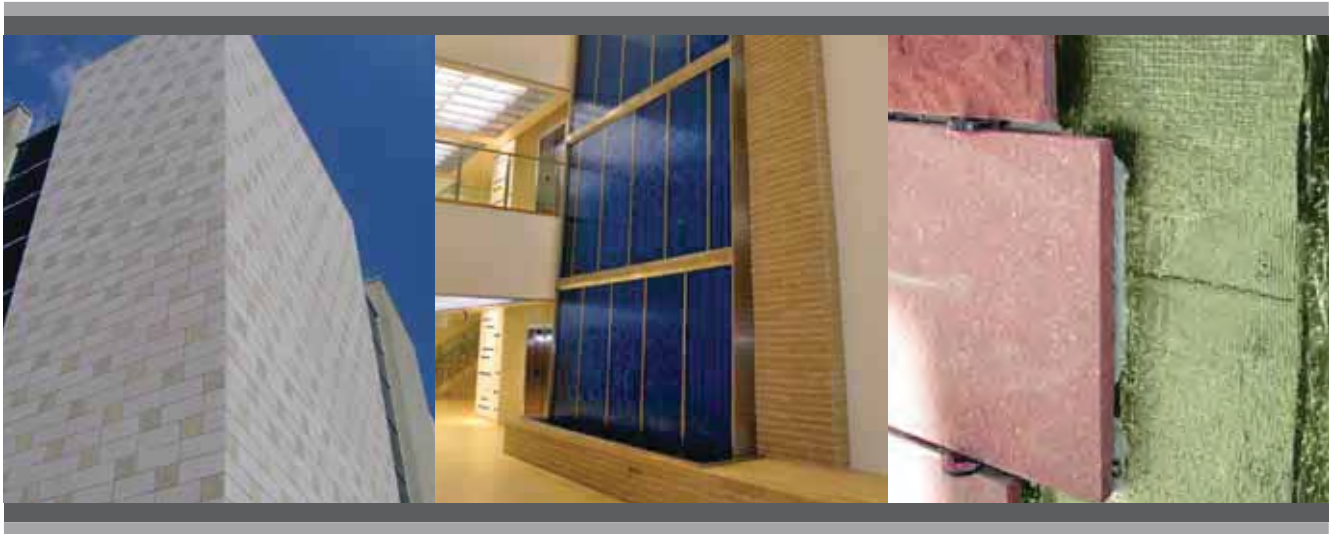
Utilizing thinner cladding materials such as ARRIS■tile Renaissance® Units effectively reduces transportation and the structural components in the building envelope. This means a lower carbon footprint and lower costs may be achieved.

Available Standard Features

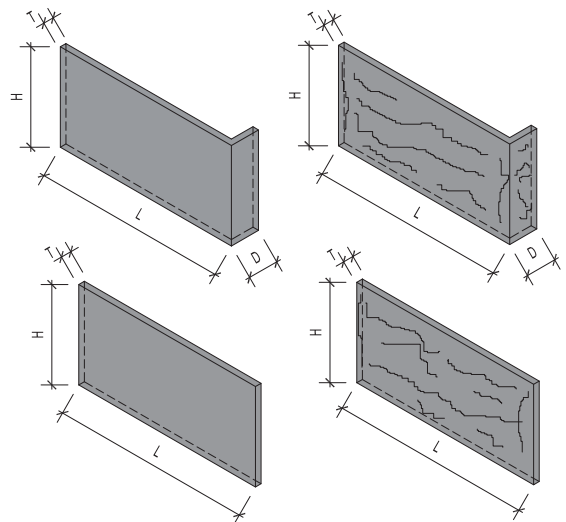
- Nominal 4", 8" and 12" face rises; nominal 24" lengths and 3/4" thickness
- Ten standard colors
- Rocked and Smooth textures
- Return corner units

Optional Features

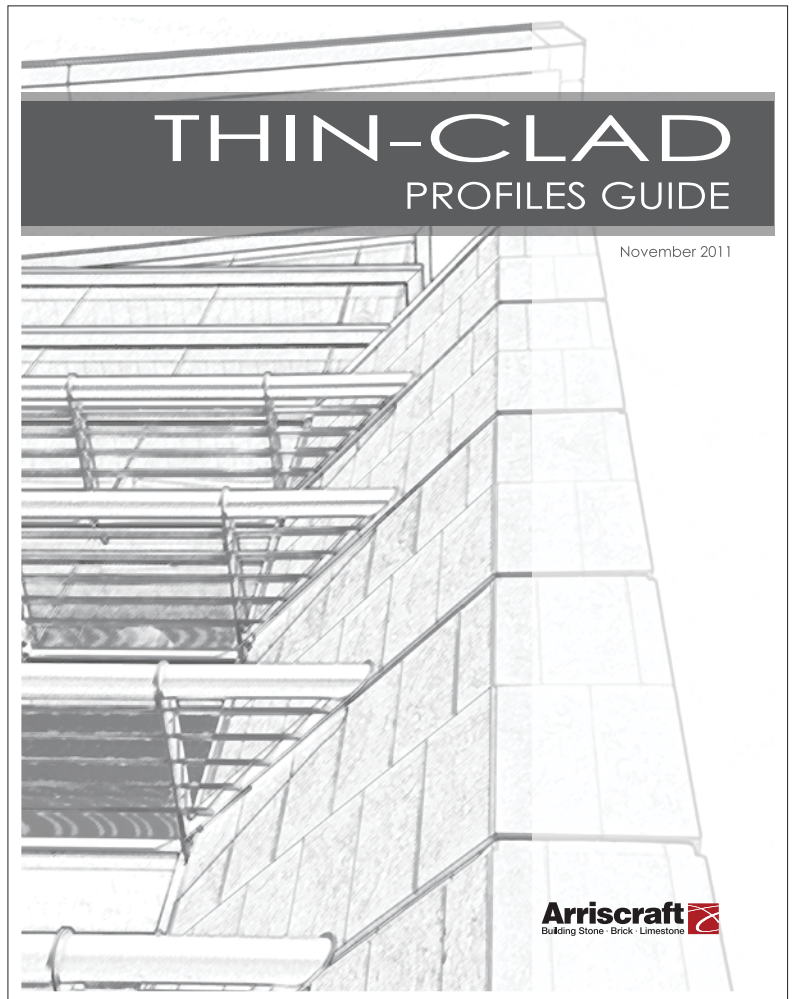
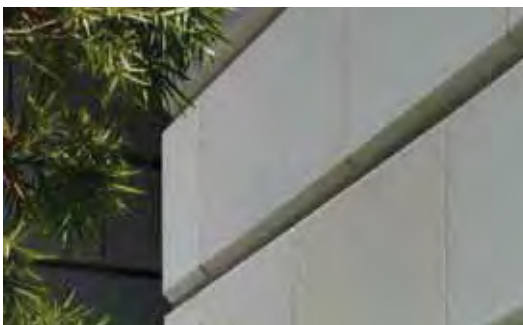
- Custom colors (minimum order quantities may apply)
- Custom profiles (Refer to the Thin-Clad Profiles Guide)



	HEIGHT (H)	LENGTH (L)	THICKNESS (T)	Depth (D)
Corners:	3-5/8"	≤ 22-7/8"	3/4"	3-5/8"
	7-5/8"	≤ 22-7/8"	3/4"	3-5/8"
	11-5/8"	≤ 22-7/8"	3/4"	3-5/8"
Stretchers:	3-5/8"	23-5/8"	3/4"	
	7-5/8"	23-5/8"	3/4"	
	11-5/8"	23-5/8"	3/4"	

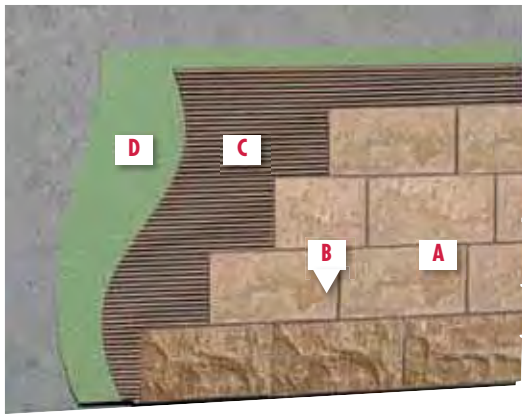


For more information about ARRIS■tile custom profiles, call your Arriscraft representative.



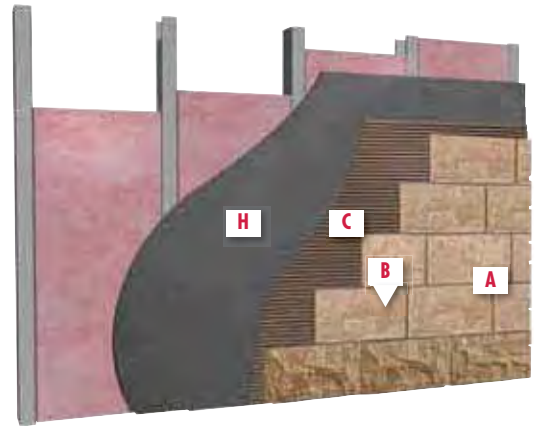
Exterior Wall

Concrete wall – Method: Direct adhere with fluid applied waterproofing membrane



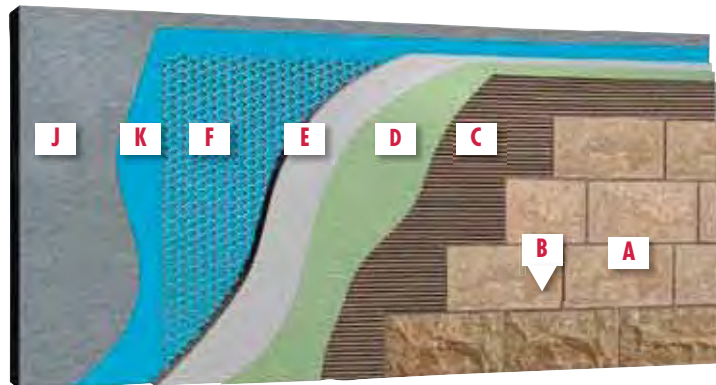
Interior Wall

Framed wall with Cement Backer board substrate



Exterior Wall

Concrete wall with Lathe and scratch substrate



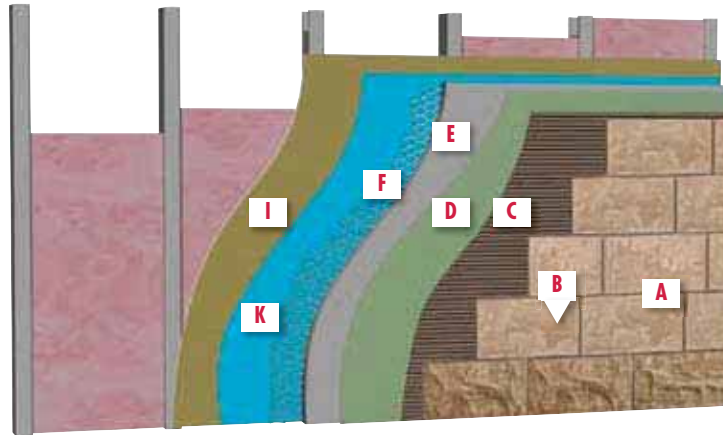
DETAIL LEGEND

- A** ARRIS Tile
- B** LATICRETE® Premium Masonry Pointing Mortar
- C** LATICRETE Hi Bond Masonry Veneer Mortar

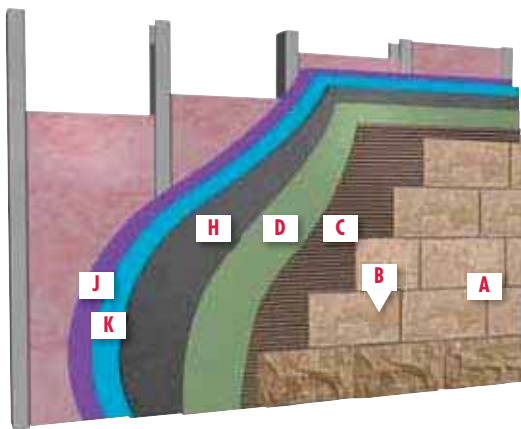
- D** LATICRETE Air & Water Barrier
(for warranty qualification some applications may require waterproofing and air and water barrier membrane)
- E** LATICRETE Premium Fortified Mortar Bed
- F** Metal Lath, 3.4# galvanized diamond wire lath

- H** Permabase® cement board
- I** EXP exterior rated sheathing
- J** Concrete or masonry
- K** Optional drainage barrier

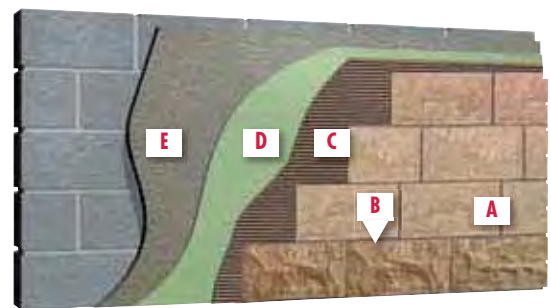
Exterior Wall
Framed wall with Exterior Rated Sheathing. Lathe and Scratch substrate



Exterior Wall
Framed wall with Exterior Rated Sheathing. Cement Backer Board substrate



Exterior Wall
Concrete Masonry Unit (CMU) wall with skim coat - Method: Direct adhere with fluid applied waterproofing membrane



NOTE: Substrates scheduled to receive manufactured stone, natural stone and thin brick must be structurally sound, rigid and conform to good design/engineering practices in accord with all applicable building codes with maximum deflection under all live, dead and impact loads, including concentrated and all anticipated loads of $L/600$ for all exterior veneer types. Steel and wood frame constructs shall also be designed to meet this criteria. Lateral bracing and edge support for cement backer board panels is required. Install sheathing panels as directed by board manufacturer's installation instructions and building code requirements.

2. LATICRETE® Premium Pointing Mortar is designed to meet product applicable project specifications. LATICRETE Premium Pointing Mortar does not inhibit efflorescence from occurring in natural or manufactured stone facade installations. Efflorescence is a normal condition that may occur when installing portland cement based products. During installation, strike joints in a consistent time frame relevant to application time. Pointing mortar should be thumbprint dry before striking. Striking joints too early or too late can create color inconsistencies.

3. LATICRETE Premium Pointing Mortar color samples are guides only. LATICRETE does not warrant color matching to any color guide produced. Actual shade and texture will depend on job site conditions, lighting, installation techniques, and types of tile or stone used. Verify actual appearance and compatibility with a test area before installing. Blend colored mortars with different control numbers. No claims for color shade variations will be honored.

4. Please consult LATICRETE Technical Services for more information. 1.800.243.4788, ext. 235, www.laticrete.com, technicalservices@laticrete.com.

5. For information on pumpable scratch and brown coats, contact LATICRETE Technical Services.

6. For complete application information and limitations consult related Product Data Sheets and Execution Statements related to these details and applicable standards. See warranty Data Sheet 025.0SPD for full information and terms.

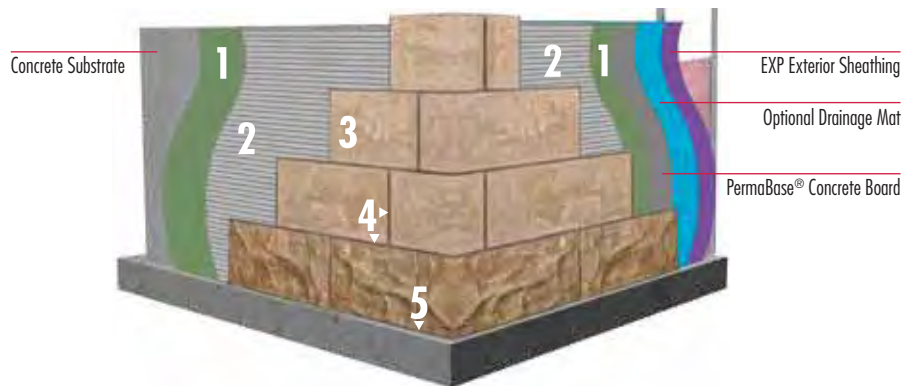
7. As a professional courtesy, LATICRETE offers technical services free of charge. The user maintains all responsibility for verifying the applicability and suitability of the technical service or information provided.

THE LATICRETE ADVANTAGE

A Complete Installation System

Factory Controlled Quality

Labor and Materials Warranty



1 LATICRETE® Air & Water Barrier

2 LATICRETE Hi-Bond Masonry Veneer Mortar

3 Arriscraft ARRIS•tile Renaissance®

4 LATICRETE Premium Pointing Mortar

5 LATICRETE Latasil™

THE CHALLENGE

The explosive increase in popularity of this adhered masonry veneer facades has created a need for higher performance, factory produced installation materials to assure consistently high quality installations.

Up to now, the installation of adhered masonry veneers has required the use of site-mixed Type S or Type N mortars — materials that are subject to large variations in consistency, quality and performance and which also limit the installation technique to that of traditional masonry.

Projects that have been plagued by delaminating stone, water intrusion and other performance issues have left specifiers in need of a coordinated solution. This traditional method is not engineered as part of a complete wall system and therefore does not offer warranties from a reliable source willing to stand behind the installation.

THE SOLUTION

Realizing these opportunities, and based on our globally proven technology, LATICRETE has developed an installation system that provides a permanent, high strength installation that is freeze/thaw stable and protected from water intrusion.

Backed by either the LATICRETE® 15 Year System Warranty or 25 Year System Warranty*, the LATICRETE Masonry Veneer Installation System (MVIS™) allows for increased productivity utilizing either traditional masonry installation techniques or the “tile setter’s” method.

Vastly expanded architectural details are offered at www.laticrete.com/MVIS to help design professionals, contractors and installers understand the range of possible applications — and appropriate products and techniques which will assure long-term performance on projects of all types.

*See Data Sheet 230.15SPD and 025.0SPD for complete warranty information.

GREENGUARD Certified
LOW VOC
LEED COMPLIANT



Many companies might say their products are low VOC, only one independently certifies it — LATICRETE.

- Third Party GREENGUARD Certification, Required to Meet Stringent Indoor Air Quality Standards
- Certified by GREENGUARD for Children & Schools
- Helps Contribute Toward LEED Certification
- Product Certifications Readily Available at www.laticrete.com/green

LATICRETE® Air & Water Barrier

A single component, load bearing, vapor permeable, fluid applied, waterproofing, crack isolation, air barrier membrane. LATICRETE Air & Water Barrier produces a seamless, monolithic elastomeric coating and bonds directly to a wide variety of substrates.

- Install Adhered Masonry Veneers (AMV) in 1 – 2 hours
- Designed for use as an air and water barrier behind exterior wall claddings
- Excellent bond strength
- Improves energy and indoor air quality
- Easy to clean up with water
- Exceeds ICC-ES AC 212

PACKAGING

Commercial Unit: 5 gallon (19 l) pail liquid; 36 units per pallet.

APPROXIMATE COVERAGE

Per Commercial Unit	250 ft ² (23.2 m ²)
---------------------	--



Warranty: 25 Year
Refer to Data Sheet 661.0



LATAPOXY® Waterproof Flashing Mortar

LATAPOXY® Waterproof Flashing Mortar is an epoxy based 3 component, trowel applied, waterproofing and vapor barrier membrane. It can be used to waterproof seams, gaps or joints between a variety of substrates and metal and PVC pipe penetrations or flashing. It is specifically designed to be used under adhered masonry veneer, stone or brick for rapid installations which require a fast curing waterproof flashing. LATAPOXY Waterproof Flashing Mortar is flexible, easy to apply and will allow for rapid installations.

- Easy to apply using a trowel
- Adheres to metal and PVC pipes, drains and flashing
- Waterproof seam between flashing and adjacent waterproofing materials

PACKAGING

3.5 gallon pail with 2 LATAPOXY Waterproof Flashing Mortar Part A 1.4 lbs (0.65 kg), 2 LATAPOXY Waterproof Flashing Mortar Part B 1.15 lbs (0.5 kg), and 2 LATAPOXY Waterproof Flashing Mortar Part C 5.5 lbs (2.5 kg)

48 units per pallet.

APPROXIMATE COVERAGE

45 ft²/unit (4.2 m²) at 1/8" (3 mm) thick, depending on application



Warranty: 25 Year
Refer to Data Sheet 070.0

Polymer Mortified Veneer Mortar



Performance Level: BEST

Warranty: 25 Year

Refer to Data Sheet 246.0



LATICRETE® Hi-Bond Masonry Veneer Mortar

The ultimate, polymer fortified, thin-set mortar for interior and exterior installation of masonry veneer, stone, ceramic tile, quarry tile, pavers and thin brick. LATICRETE® Hi-Bond Masonry Veneer Mortar, designed to mix just with water, has a long open time with unsurpassed adhesion and workability.

PACKAGING

50 lb (22.7 kg) bag; 56 bags per pallet; Grey.

MIXING

Approximately 5.5 quarts (5.2 *v*) of water per bag.

APPROXIMATE COVERAGE Per 50 lb (22.7 kg) bag	
NOTCH TROWEL	COVERAGE
1/4" x 3/8" (6 mm x 9 mm)	50–60 ft ² (4.6–5.6 m ²)
1/2" x 1/2" (12 mm x 12 mm)	40–45 ft ² (3.7–4.2 m ²)
Adhered Masonry Veneer Application Method	30–33 ft ² (2.8–3.1 m ²)



Performance Level: BEST

Warranty: 25 Year

Refer to Data Sheet 247.0

LATICRETE Hi-Bond Rapid Masonry Veneer Mortar

The ultimate, fast setting, polymer fortified, thin-set mortar for interior and exterior installation of masonry veneer, quarry tile, pavers and brick. LATICRETE Hi-Bond Rapid Masonry Veneer Mortar is designed to mix with just water and provide unsurpassed adhesion and workability.

PACKAGING

25 lb (11.3 kg) bag; 104 bags per pallet; Grey.

MIXING

Approximately 3 quarts (2.9 *v*) of water per 25 lb (11.3 kg) bag.

APPROXIMATE COVERAGE Per 25 lb (11.3 kg) bag	
NOTCH TROWEL	COVERAGE
1/4" x 3/8" (6 mm x 9 mm)	30 – 35 ft ² (2.8 – 3.3 m ²)
1/2" x 1/2" (12 mm x 12 mm)	20 – 23 ft ² (1.9 – 2.1 m ²)
Adhered Masonry Veneer Application Method	15 – 17 ft ² (1.4 – 1.6 m ²)

LATICRETE Masonry Veneer Mortar

LATICRETE Masonry Veneer Mortar is a patented, versatile polymer fortified mortar designed specifically for the installation of adhered masonry veneer, stone and thin brick. A high performance mix provides maximum non-sag performance for vertical installations and also obtains maximum bond strength to the substrate and selected veneers. Reinforced with Kevlar[^] for added strength, LATICRETE Masonry Veneer Mortar offers exceptional workability.

PACKAGING

40 lb (18.2 kg) bag; 56 bags per pallet; Grey.

APPROXIMATE COVERAGE Per 40 lb (18 kg) bag		
VERTICAL APPLICATIONS	ft ²	m ²
1/4" x 3/8" (6 mm x 9 mm) notched trowel	48 – 58	4.4 – 5.4
1/2" x 1/2" (12 mm x 12 mm) notched trowel	36 – 44	3.3 – 4.1
Adhered Masonry Veneer Application Method	28 – 35	2.6 – 3.2

[^] United States Patent No.: 6784229 B2 (and other patents).



Warranty: 25 Year
Refer to Data Sheet 060.0



LATICRETE Premium Mortar Bed

A polymer fortified blend of carefully selected raw materials, portland cement and graded aggregates. LATICRETE Premium Mortar Bed does not require the use of latex admix, you only need to add water to produce thick bed mortar with exceptional strength.

PACKAGING

60 lb (27.3 kg) bag; 56 bags per pallet.

APPROXIMATE COVERAGE
12 ft ² at 1/2" (1.1 m ² at 12 mm)
6 ft ² at 1" thickness (0.56 m ² at 25 mm)
3 ft ² at 2" (0.3 m ² at 50 mm)



Warranty: 25 Year
Refer to Data Sheet 263.0





Warranty: 25 Year

Refer to Data Sheets
679.0 and 679.3

LATAPOXY® 310 Stone Adhesive

A two-component, high strength construction epoxy adhesive for spot bonding large format tile and stone on vertical surfaces, for interior or approved exterior applications. Offers major advantages in terms of speed and productivity over mechanical anchoring, plaster and wire, and the thin-set method of veneer installation. Comes in both standard and rapid version for faster curing. Easier to work with when compared to traditional methods – no drilling, cutting of kerfs or setting of pins – LATAPOXY® 310 Stone Adhesive allows for quick, easy plumb adjustment while stone is in place to compensate for uneven walls and stone thickness variations. LATAPOXY 310 Stone Adhesive is permanent; it will not fail or deteriorate over time and is ICC and IBC approved.

PACKAGING

Kit: 2.6 gallon (10 ℓ): All components packed in one carton; 40 cartons per pallet. Available in standard and rapid versions.
2 gallon (8 ℓ): 1.06 quart (8 x ℓ) units packed in one carton; 40 cartons per pallet. Available in standard and rapid versions.

Cartridges: 2.3 gallons (9 ℓ) Cartridge Pack (for use in LATAPOXY 310 Cordless Mixer): 15 x 0.16 gallon (0.6 ℓ) cartridges per carton, 27 cartons per pallet. Available in standard and rapid versions.

MIXING

Combine equal volumes of LATAPOXY 310 Stone Adhesive Part A and LATAPOXY 310 Stone Adhesive Part B (1:1). Do not mix more than approximately 0.13 gallons (0.5 ℓ) of LATAPOXY 310 Rapid Stone Adhesive at a time.

APPROXIMATE COVERAGE		
Average Inches (or millimeters) out of plumb	LATAPOXY® 310 Stone Adhesive Thickness	Approximate Coverage/10 Liter Units
Plumb Wall 1/8" (3 mm)	1/8" Thick (3 mm)	300 – 325 ft² (27 – 30 m²)
1/4" (6 mm)	1/4" Thick (6 mm)	150 – 170 ft² (14 – 16 m²)
1/2" (12 mm)	1/2" Thick (12 mm)	75 – 80 ft² (7 – 7.5 m²)



Refer to Data Sheets 683.0

LATAPOXY 310 Cordless Mixer and Nozzles

Triple your productivity of vertical stone and tile installations and dramatically reduce labor costs with the exclusive dual component LATAPOXY 310 Cordless Mixer. Quickly and easily dispenses LATAPOXY 310 Stone Adhesive onto tile, porcelain and stone veneers. Hundreds of square feet can be installed per day with less effort and greater success with this system. Patented design and gear system allow speed and dosing control for accurate applications every time. No mixing, just insert the dual component cartridge, screw on mixing nozzle and pull the trigger!

PACKAGING

One LATAPOXY 310 Cordless Mixer per carton; 24 cartons per pallet.

LATICRETE® Premium Masonry Pointing Mortar

LATICRETE® Premium Masonry Pointing Mortar is a premium factory prepared high performance, fast setting masonry pointing mortar that provides a masonry pointing mortar joint that is dense and hard. LATICRETE Premium Masonry Pointing Mortar is color consistent. Ideal for floors and walls (joint widths of 1/4" – 1/2" [6 – 12 mm]). Mix only with water.

COLORS

See Pointing Mortar Color Chart on page 14 for a list of available colors.

PACKAGING

25 lb (11.3 kg) bag; 104 bags per pallet.

APPROXIMATE COVERAGE

350–380 linear feet (107–116 linear m) with
1/4" deep by 3/8" (6 mm x 9 mm) wide joint



Performance Level: BEST

Warranty: 25 Year

Refer to Data Sheet 274.0



LATICRETE® Latasil™

High performance, 100% silicone sealant designed for use in coves, corners, changes in plane and expansion joints in exterior and interior applications of adhered masonry veneer. Can be used in fountains, water features and other wet area applications. LATICRETE® Latasil™ conforms to ASTM C-920 and ASTM C-794 adhesion properties and inhibits the growth of stain-causing mold and mildew in sealant joints with Microban® antimicrobial product protection.

COLORS

See Pointing Mortar Color Chart on page 14 for a list of available colors.

PACKAGING

10.3 oz (305 ml) cartridges; 6 cartridges per carton; 240 cartons per pallet.

APPROXIMATE COVERAGE Per cartridge

THICKNESS	COVERAGE
1/4" x 1/4" (6 mm x 6 mm)	25 linear feet (7.62 m)
3/8" x 3/8" (9 mm x 9 mm)	11 linear feet (3.35 m)



Warranty: 25 Year

Refer to Data Sheets 6200.1



Pointing Mortar and Sealant Color Chart

This chart shows available colors for the following:

LATICRETE Masonry Pointing Mortar

LATICRETE Premium Masonry Pointing Mortar

LATICRETE Epoxy Pointing Mortar

△ LATICRETE Latasil™ available in clear and colors indicated.

**Note: Pointing mortar color availability is subject to change.
Visit www.laticrete.com for most current color selections.**



44 Bright White
△



39 Mushroom
△



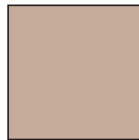
40 Latte
△



66 Chestnut Brown
△



24 Natural Grey
△



38 River Rock



58 Terra Cotta
△



46 Quarry Red

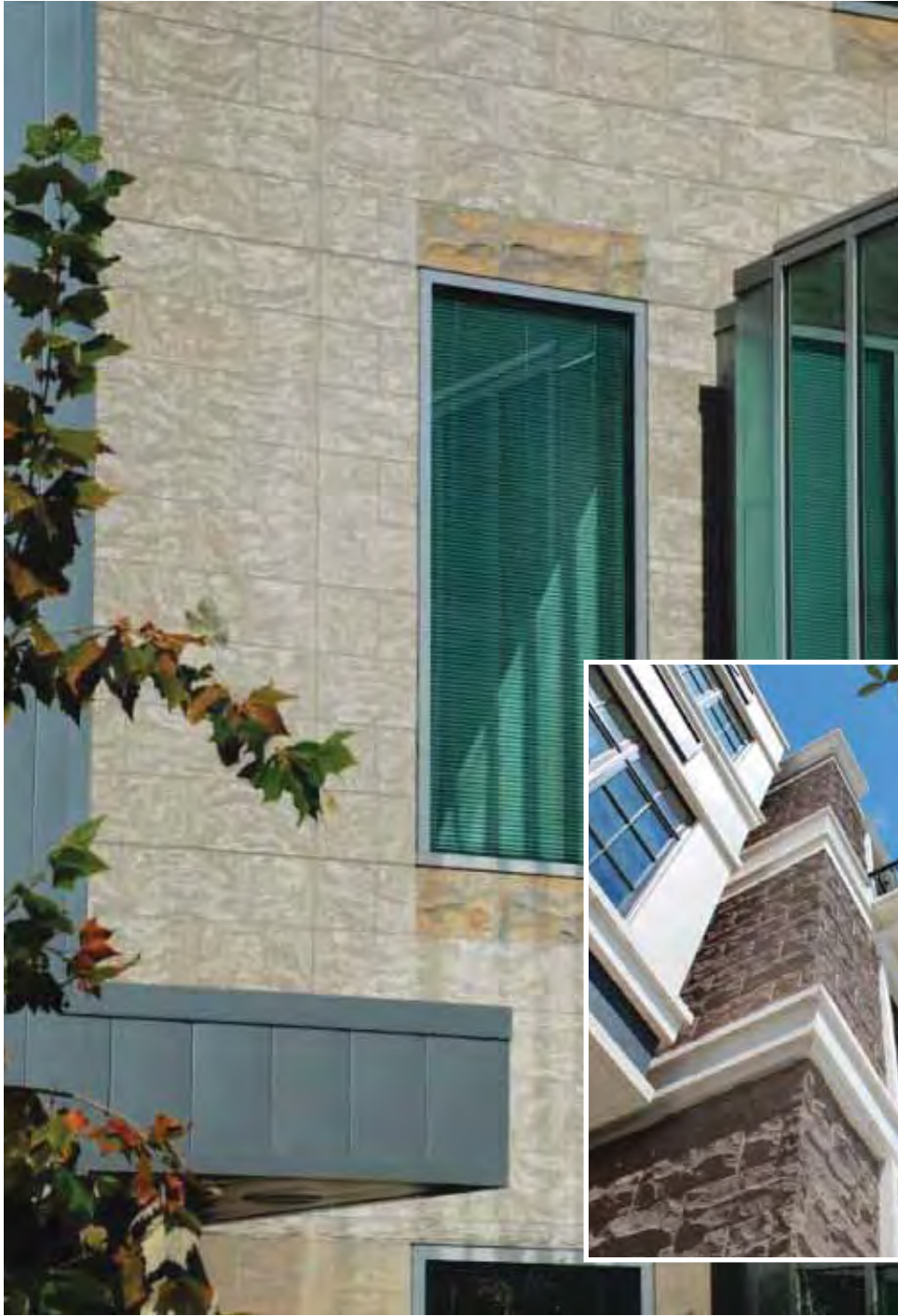


45 Raven

POINTING MORTAR AND SEALANT COLOR GUIDELINES

Pointing Mortar and sealant samples are guides only. LATICRETE does not warrant color matching to this color chart or to any color guide produced. Actual shade and texture will depend on job site conditions, lighting, installation techniques and types of adhered masonry veneer used, and may vary from this color chart, color

channel kits and color swatch on product packaging. Verify actual appearance and compatibility with a test area before installing. Blend pointing mortar with different control numbers. No claims for color shade variations will be honored.





Corporate Headquarters:

LATICRETE International, Inc.
One LATICRETE Park North
Bethany, CT 06524-3423 USA
1.800.243.4788
+1.203.393.0010

www.laticrete.com

Asia Pacific: +852.2526.6660

Australia: +61.7.3865.1599

China: +86.21.5789.3300

Europe: +34.96.649.1908

India: +91.40.3041.3100

Latin America: +1.203.393.0010

Middle East: +971.7.244.6396

South East Asia: +65.6515.3028

DS-025.2-0312

©2012 LATICRETE International, Inc.
All trademarks shown are the intellectual properties of their respective owners.

