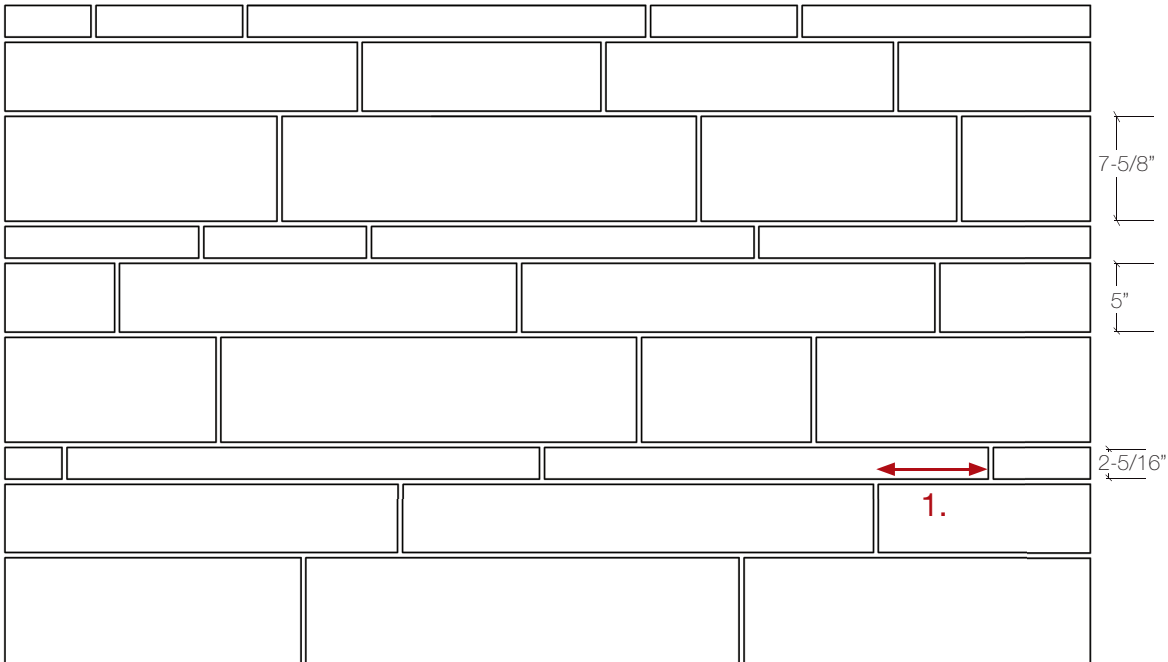


# Adair® Studio

Typical Elevation • 17:33:50 Coursed Bond • 3/8" Mortar Joints



## Guidelines for Installation:

1. Minimum 4" overlap of vertical joints.
2. To maintain consistency of appearance, mix small and large units.

## Avoid:

- Stack bonding.

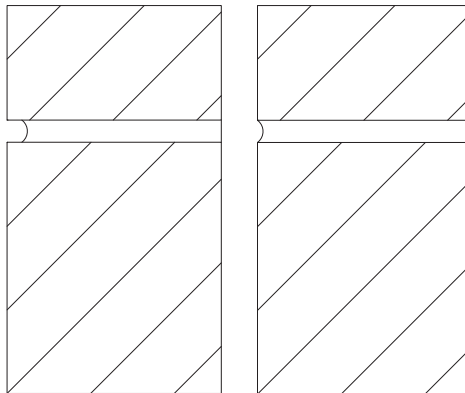
Size	Pieces* per 32 sq. ft.	Nominal Length of one Piece
AST22	8	36"
AST50	8	36"
AST75	8	36"

\*One Piece is based on a 36" length and may be comprised of 2 or more individual stones.

# General Installation Guidelines

- Arriscraft recommends the use of a Portland cement-lime mortar, proportioned to a 1:1:6 ratio.
- Masonry units should be laid with full head and bed joints except where they are used for weep holes or ventilation.
- Bevel mortar from rear face to prevent protrusion into cavity.
- Prevent excessive mortar droppings by cutting off excess mortar with trowel as the units are laid.
- Butter head joints of unit being placed in wall.
- Place unit to tightly compress mortar.
- Do not re-adjust unit once it has been set in place.
- Tool joints when mortar is thumbprint hard. This timing will depend on the mortar properties and weather conditions.
- Tool joints to a tightly compressed surface to achieve the most weather resistance. Concave tooled joints provide the best resistance to moisture penetration.
- After tooling, any excess mortar and dust should be brushed from the masonry surface using a soft bristle brush. Avoid rubbing or pressing the mortar into the units.
- Refer to additional guidelines on the BASIC CARE sheet.

## Joint Profile:



Recessed

Concave

Feb 2019