



Thin-Clad



Thin is in.

Take advantage of the most comprehensive set of thin-clad materials on the market today:

ARRIS•tile Renaissance® and ARRIS•stack Thin-Adhered Veneers are adhered to a suitable solid substrate using polymer fortified mortars. Applications such as face-sealed, drainage plane, insulated drainage plane, and ASHRAE 90.1 adhered veneers are possible.

ARRIS•clip Renaissance® Clipped or anchored rainscreen veneers are kerfed, thin Renaissance® units that are simply 'clipped' to a substrate using a channel system. These can be used in sealed or open, back drained and ventilated rainscreen applications. ASHRAE 90.1 installations are also possible.

Arriscraft Thin-Clad Units are versatile, surprisingly affordable and easy to install. Choose from the two available thin-clad systems to suit the requirements of your specific project. Thin-Clad Units have proven durability and come with the Arriscraft Lifetime Product Warranty. Thin-Clad Renaissance® Units will support "Green" product and design philosophies with attributes such as low embodied energy, reduced transportation, and a VOC-free finish for healthy interior spaces.

Thin-Clad ARRIS•tile, ARRIS•clip and ARRIS•stack corner units maintain the look and beauty of traditional full bed stone installations with all of the benefits associated with thinner wall systems. In addition, various custom profiles such as sill, watertable and bullnose profiles are available to complete the overall stone veneer. Maximum design versatility can be achieved by coordinating with our full-bed and ARRIS•cast products. Arriscraft's proprietary production method ensures remarkably natural and unique color ranges and striations unmatched by other manufactured stone products.

Enhance your architectural design vision by using Thin-Clad Units.

*This page: BBVA Compass – Kingwood, TX Branch
Ziegler Cooper Architects
ARRIS•clip Renaissance® Units*

*Cover: Kelsey-Seybold Clinic - Pasadena, TX
Kirksey Architecture
ARRIS•tile Renaissance® Units*





BBVA Compass

BBVA Compass

Thin-Adhered Veneers

ARRIS•tile Renaissance® and ARRIS•stack Units have become favorites for classic interior designs and for exterior applications in new and renovation applications. ARRIS•tile Renaissance® and ARRIS•stack Units can be adhered to suitable solid substrates. Developed for vertical wall applications, they may be site cut, trimmed and finished to custom lengths, shapes or sizes.

ARRIS•stack is a new addition to the Arriscraft Thin-Clad family of products. This unique product creates a modern twist to thin adhered stone installations with its elegant and timeless dry stack ledgerstone style.

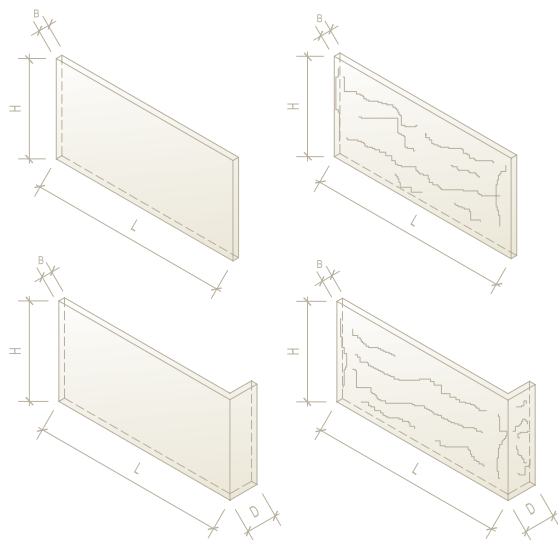
ARRIS•tile

Available standard features:

- Nominal 4" (100 mm), 8" (200 mm) and 12" (300 mm) face rises; nominal 24" (600 mm) lengths and 3/4" (19 mm) thickness
- 1-3/8" (35 mm) thicknesses are also available in smooth textured material
- Twelve standard colors
- Rocked, Smooth, Satin and Split face textures
- Return corner units

Optional features:

- Custom colors (minimum order quantities may apply)
- Custom profiles (Refer to the Thin-Clad Profiles Guide)



Height (H)	Length (L)	Bed (B)	Depth (D)
------------	------------	---------	-----------

Stretchers:

3-5/8" (90 mm)	23-5/8" (590 mm)	3/4" (19 mm)	
7-5/8" (190 mm)	23-5/8" (590 mm)	3/4" (19 mm)	
11-5/8" (290 mm)	23-5/8" (590 mm)	3/4" (19 mm)	

Corners:

3-5/8" (90 mm)	≤ 22-7/8" (581 mm)	3/4" (19 mm)	3-5/8" (90 mm)
7-5/8" (190 mm)	≤ 22-7/8" (581 mm)	3/4" (19 mm)	3-5/8" (90 mm)
11-5/8" (290 mm)	≤ 22-7/8" (581 mm)	3/4" (19 mm)	3-5/8" (90 mm)

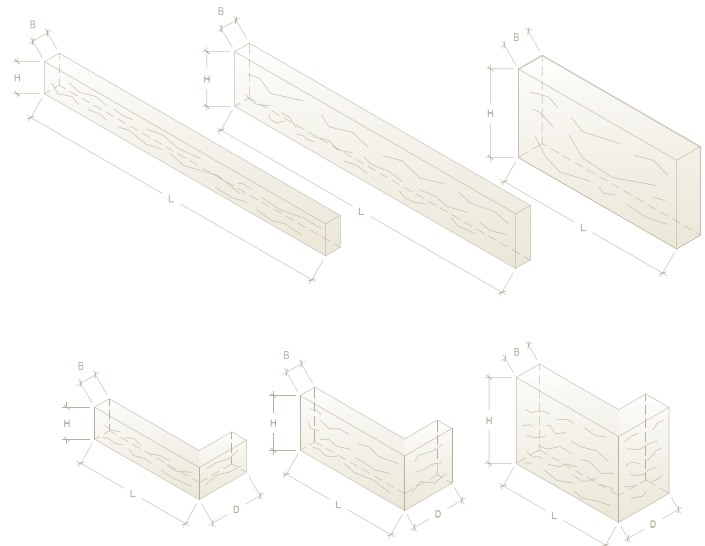
ARRIS•stack

Available standard features:

- Three face rises are pre-blended on a skid
- Single face-rise installations in 2-1/8" or 3-5/8" tall units are also available
- Eight standard colors
- Split face texture
- Return corner units

Optional features:

- Custom colors (minimum order quantities may apply)
- Custom profiles (Refer to the Thin-Clad Profiles Guide)



Height (H)	Length (L)	Bed (B)	Depth (D)
------------	------------	---------	-----------

Stretchers:

2-1/8" (54 mm)	4" to 21-1/2" (102 to 546 mm)	1-1/2" (38 mm)	
3-5/8" (92 mm)	4" to 21-1/2" (102 to 546 mm)	1-1/4" (32 mm)	
5-13/16" (148 mm)	4" to 21-1/2" (102 to 546 mm)	1-13/16" (46 mm)	

Corners:

2-1/8" (54 mm)	4" to 10" (102 to 254 mm)	1-1/2" (38 mm)	2" to 4" (51 to 102 mm)
3-5/8" (92 mm)	4" to 10" (102 to 254 mm)	1-1/4" (32 mm)	2" to 4" (51 to 102 mm)
5-13/16" (148 mm)	4" to 10" (102 to 254 mm)	1-13/16" (46 mm)	2" to 4" (51 to 102 mm)

Utilizing thinner cladding materials such as ARRIS•tile Renaissance® and ARRIS•stack Units effectively reduces transportation and the structural components in the building envelope. This means a lower carbon footprint and lower costs may be achieved.

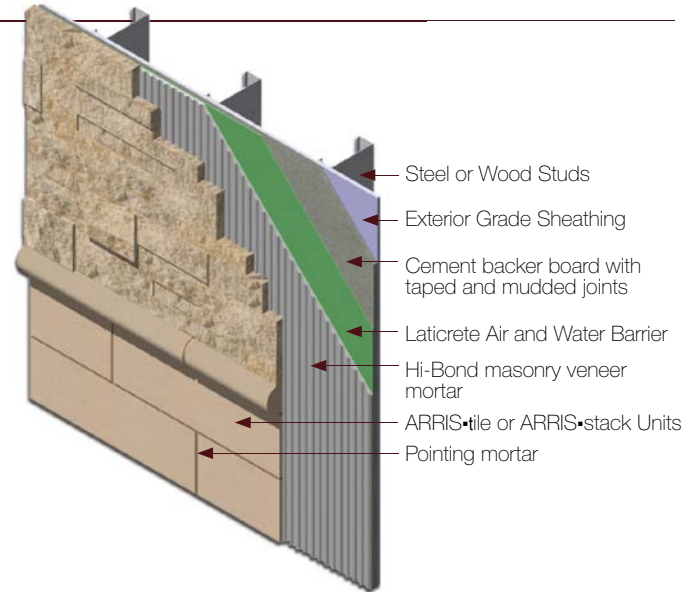
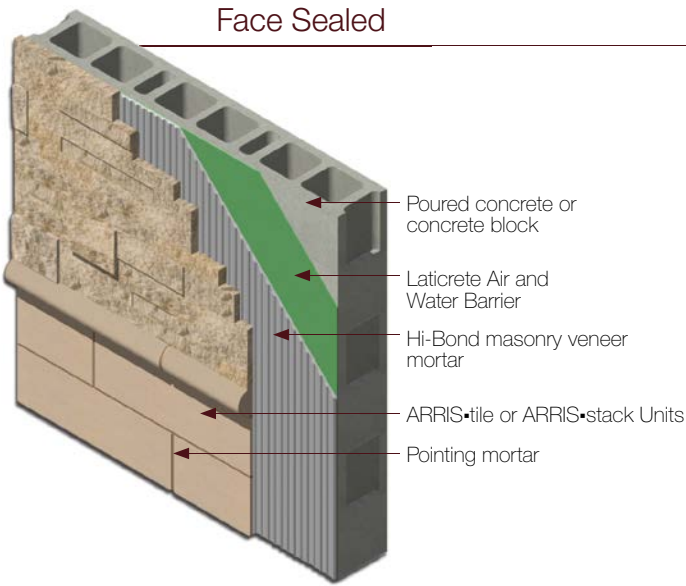


Thin-Adhered Veneers

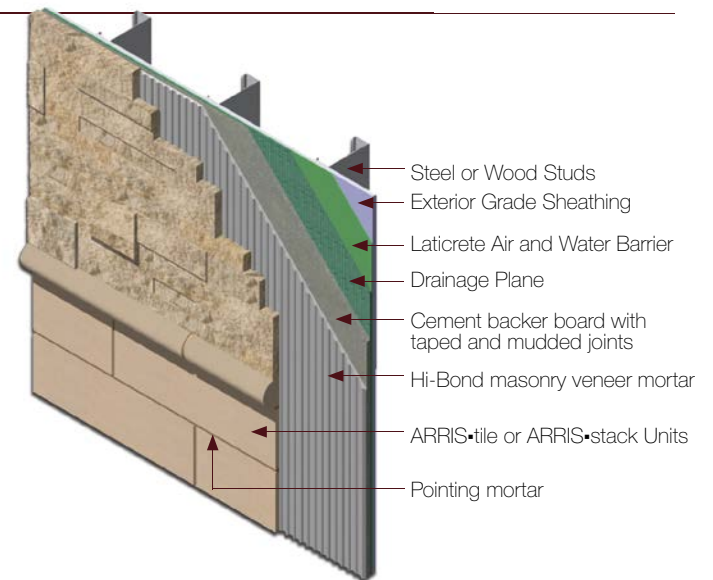
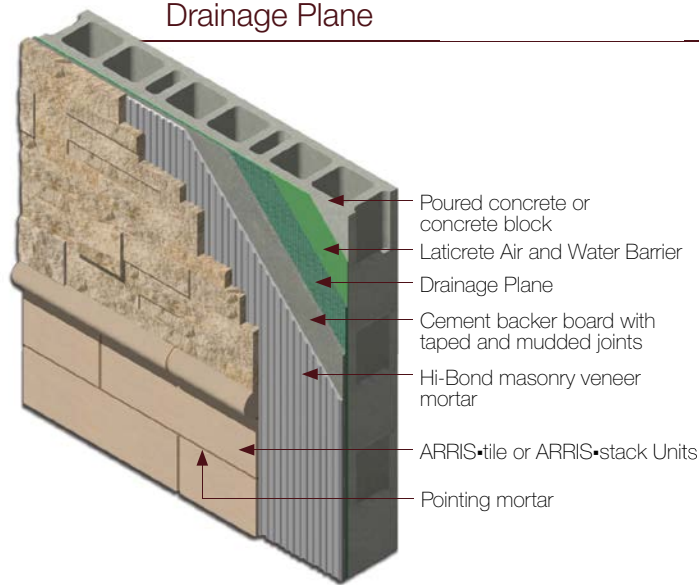
Mercantil Commerce Bank
Houston, TX
Abel Design Group
ARRIS.stack Cappuccino

Thin Adhered Veneer Installation

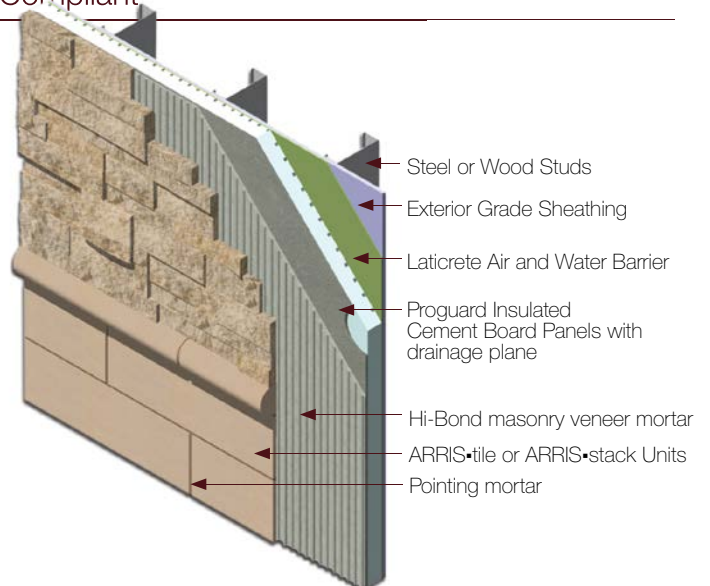
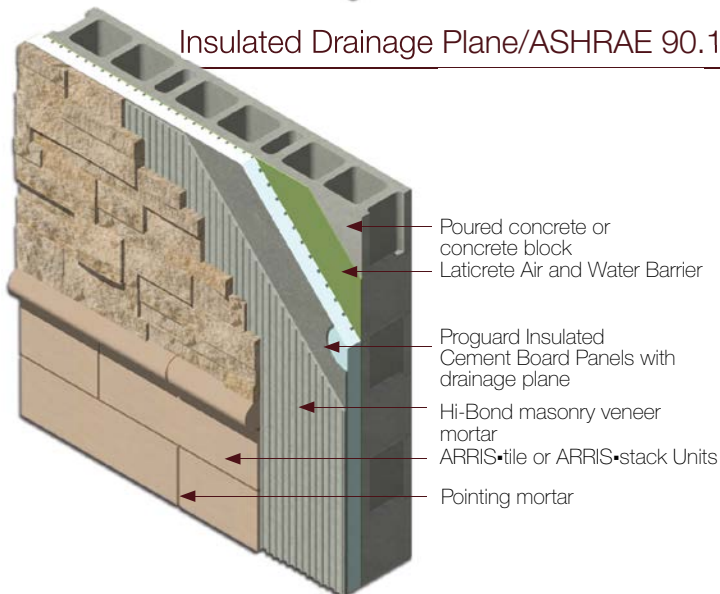
Face Sealed



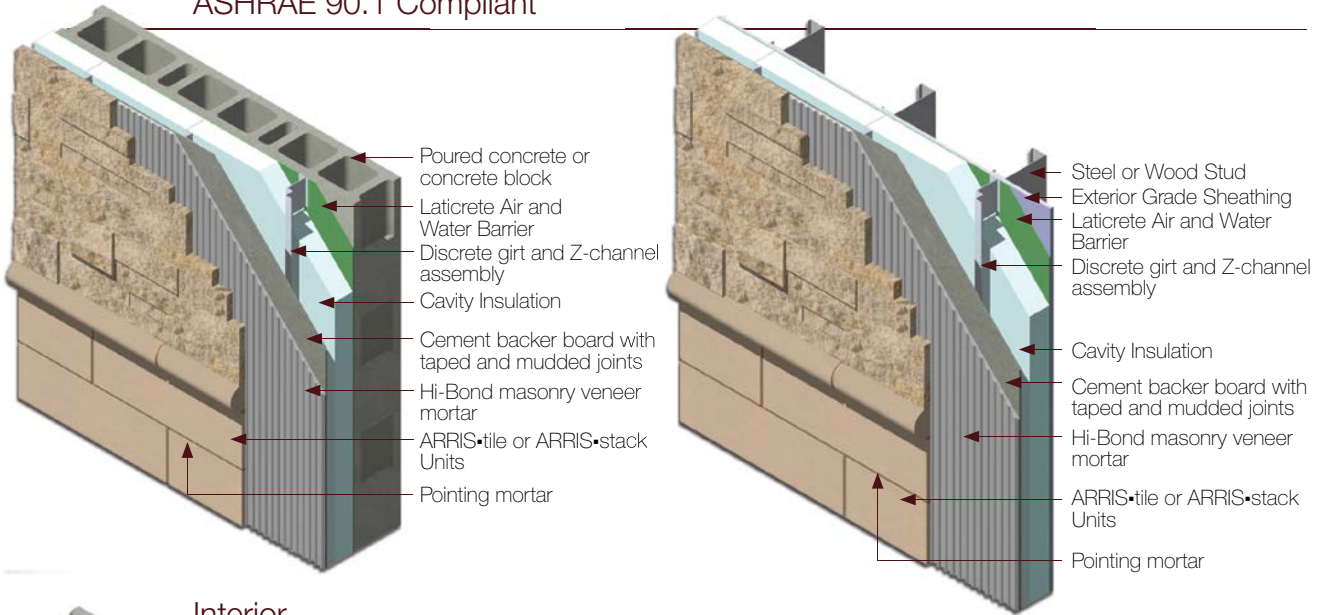
Drainage Plane



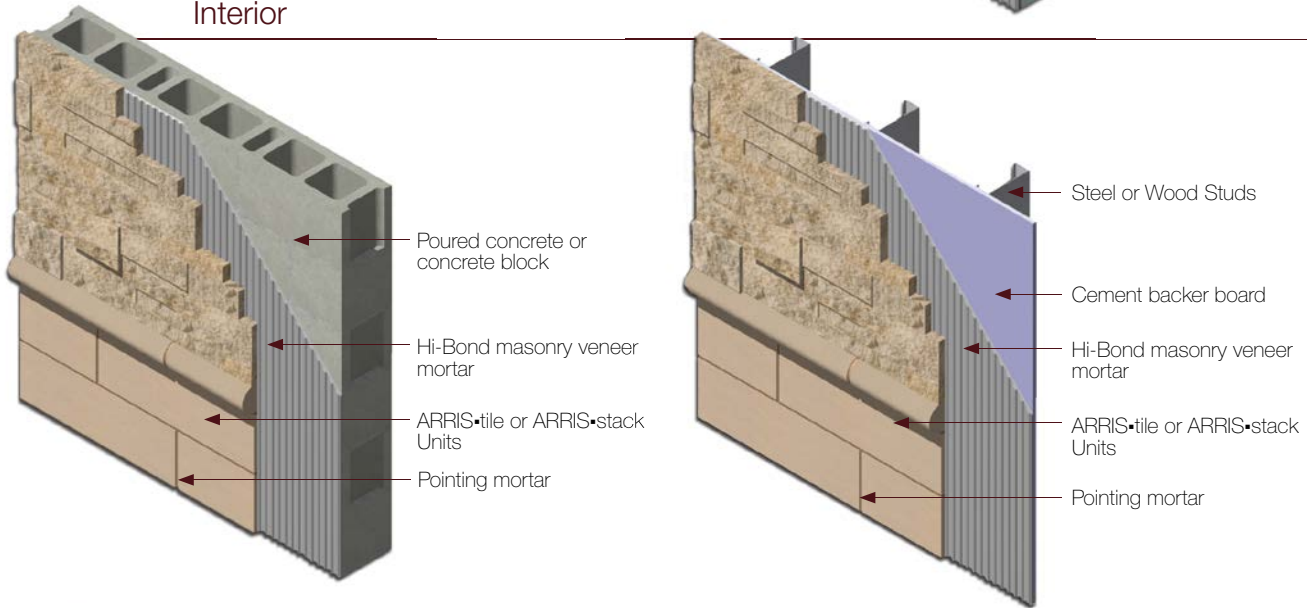
Insulated Drainage Plane/ASHRAE 90.1 Compliant



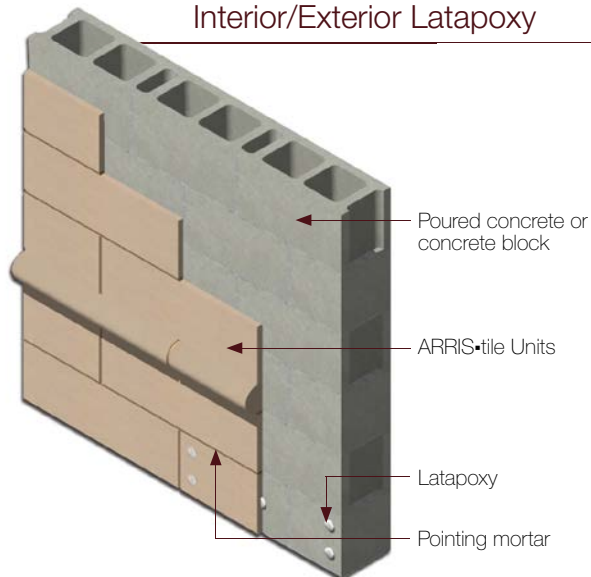
ASHRAE 90.1 Compliant



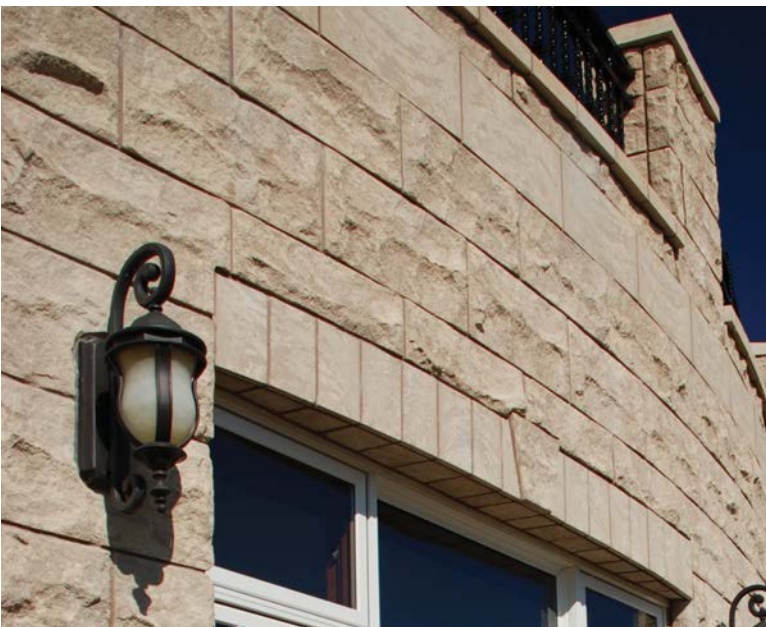
Interior



Interior/Exterior Latapoxy



ARRIS•tile and ARRIS•stack Exterior Applications



ARRIS•tile and ARRIS•stack are natural choices for your exterior cladding applications.

Create unique and diversified exteriors utilizing ARRIS•tile and ARRIS•stack. The versatility provided by the wide selection of colors, textures, profiles and sizes offers an unlimited array of design possibilities.

Available bullnoses, watertables, custom arches, chamfers and notches enable the designer to dress up a façade beyond what is typically available with many other tile products. Generate the illusion of traditional monolithic stone masonry with the standard return corner units.

Exterior ARRIS•tile and ARRIS•stack is installed with a systems approach consisting of a polymer fortified mortar such as Laticrete's Hi-Bond Masonry Veneer Mortar and waterproofing such as Laticrete's Air and Water Barrier. To complete the system, the joints may be pointed using a pointing mortar and tooled to a weather resistant finish. All of this provides the opportunity for a system warranty.

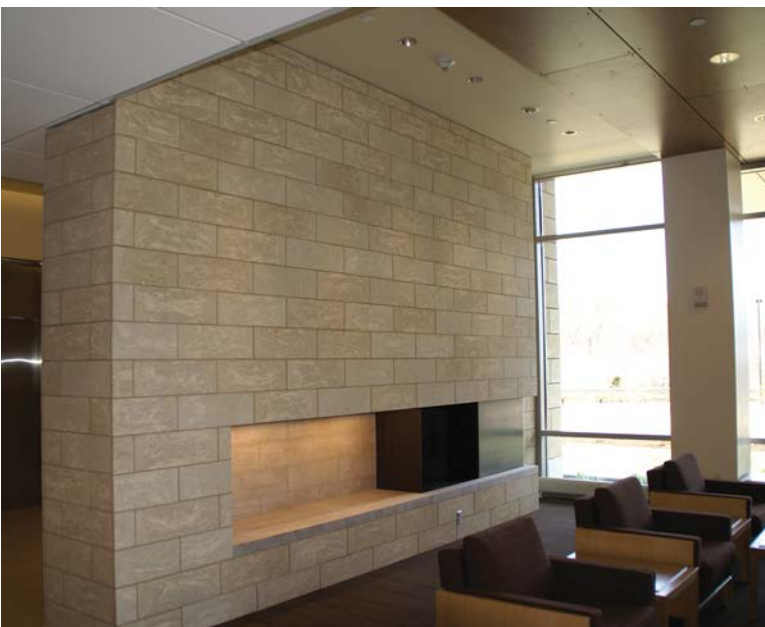
A wide variety of wall construction methods are possible with ARRIS•tile and ARRIS•stack. These include face-sealed, drainage plane, insulated drainage plane, and ASHRAE compliant applications.



Thin-Adhered Veneers

Marriott Residence Inn
Gilbert, AZ
The Richardson Design Partnership
ARRIS•tile Renaissance® Units

ARRIS•tile and ARRIS•stack Interior Applications



With ARRIS•tile and ARRIS•stack, bring the outside to the inside! Consider continuing the motif of an Arriscraft exterior stone cladding to the interior walls.

Often the Arriscraft exterior stone cladding is constructed of ARRIS•tile, ARRIS•clip or full bed Renaissance® units. In these instances envision the possibilities by continuing the look with the use of ARRIS•tile on the interior.

ARRIS•tile and ARRIS•stack establish dramatic interior spaces. Consider featuring stone on walls in lobbies, religious spaces, ballrooms and even hallways and elevator cores.

The thinner ARRIS•tile and ARRIS•stack adhered stone units afford significant savings in structural costs with the associated reduction in load. Additionally, the thinner stone materials mean more interior space.

ARRIS•tile and ARRIS•stack contribute to sustainable architecture through low embodied energy, reduced transportation and reduced structure. The units are also VOC-free ensuring safe and healthy indoor air quality for the benefit of building occupants.



Thin-Adhered Veneers

Christus St. Elizabeth Hospital
Beaumont, TX
HOK Architects
ARRIS•tile Renaissance® Units

First Baptist Church Pasadena
Ziegler Cooper Architects
ARRIS-tile Renaissance®
Renaissance® Masonry Units





Thin-Adhered Veneers

Rainscreen Veneers

ARRIS-clip Renaissance® Units are a revolutionary idea for the installation of a thin stone cladding system. These Thin-Clad units are simply clipped to a substrate on the pre-engineered Gridworx™ channel system, creating a **back-drained and ventilated rainscreen**; an easy and efficient means of installation. This cost-efficient curtain wall system allows you to achieve stone façades without the costly “curtain wall” price.

Used in both the new build and renovation markets, the ARRIS-clip Renaissance®/Gridworx™ system offers tremendous construction scheduling flexibility as the units do not have to be installed sequentially. An ARRIS-clip façade facilitates all-weather construction as it is a mortarless system. ARRIS-clip and Gridworx™ channels maintain a drainage cavity behind the units, making them an ideal thin cladding system suitable for all climatic conditions. Replacement of damaged or graffiti-stained units is straightforward, further enhancing the cost efficiency and benefits of this system.

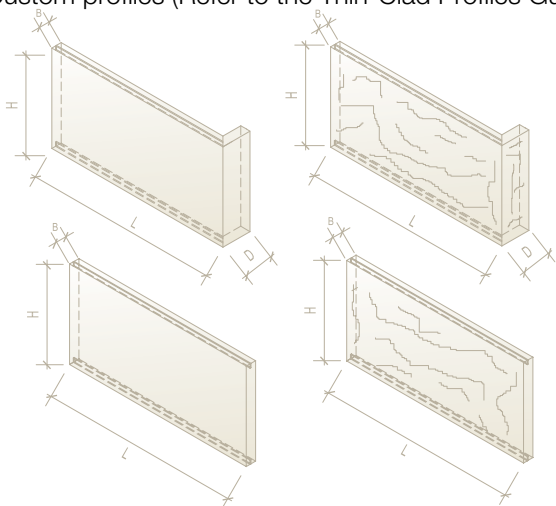
ARRIS-clip

Available standard features:

- Nominal 4" (100 mm), 8" (200 mm) and 12" (300 mm) face rises; nominal 24" (600 mm) lengths and 1-3/8" (35 mm) thickness
- 2" (50 mm) Thicknesses are also available
- Twelve standard colors
- Rocked, Smooth, Satin and Split face textures
- Return corner units

Optional features:

- Custom colors (minimum order quantities may apply)
- Custom profiles (Refer to the Thin-Clad Profiles Guide)



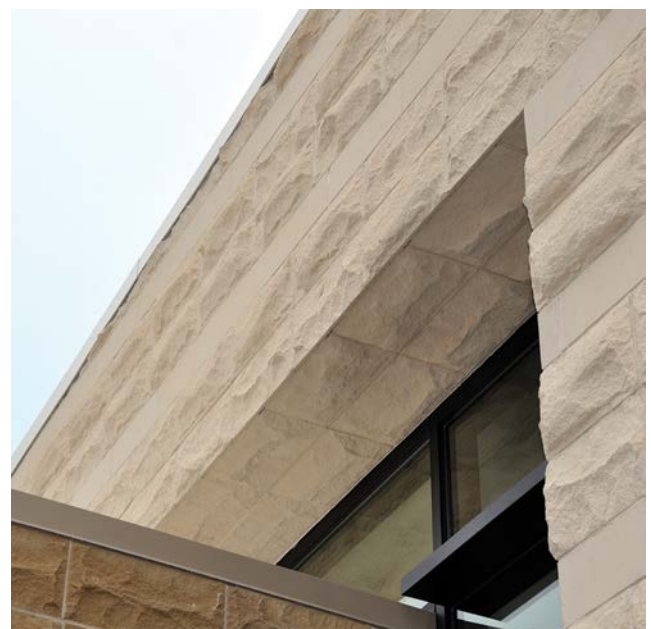
Height (H)	Length (L)	Bed (B)	Depth (D)
------------	------------	---------	-----------

Stretchers:

3-5/8" (90 mm)	23-5/8" (590 mm)	1-3/8" (35 mm)	
7-5/8" (190 mm)	23-5/8" (590 mm)	1-3/8" (35 mm)	
11-5/8" (290 mm)	23-5/8" (590 mm)	1-3/8" (35 mm)	

Corners:

3-5/8" (90 mm)	≤ 22-7/8" (581 mm)	1-3/8" (35 mm)	3-5/8" (90 mm)
7-5/8" (190 mm)	≤ 22-7/8" (581 mm)	1-3/8" (35 mm)	3-5/8" (90 mm)
11-5/8" (290 mm)	≤ 22-7/8" (581 mm)	1-3/8" (35 mm)	3-5/8" (90 mm)



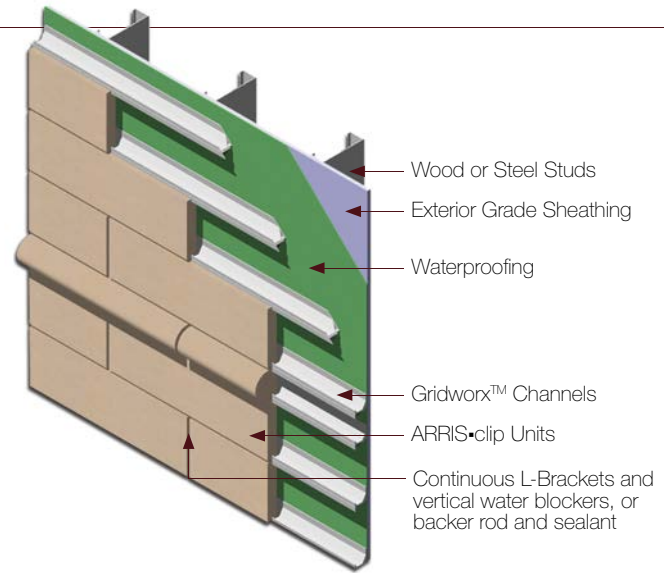
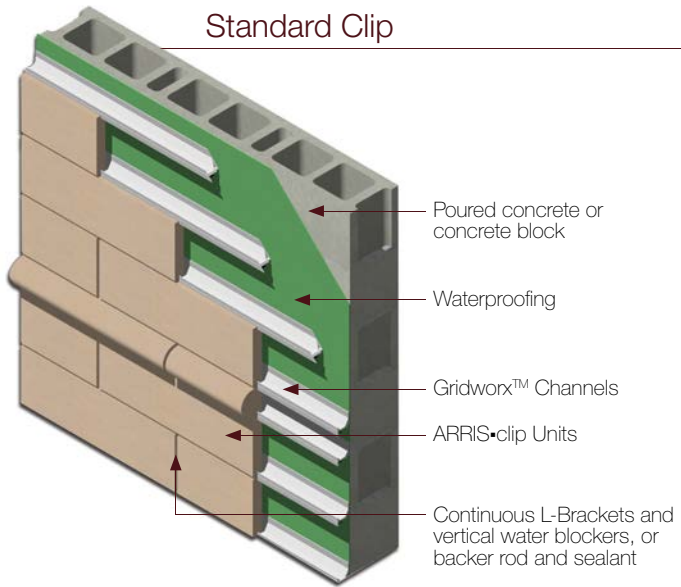


Rainscreen Veneers

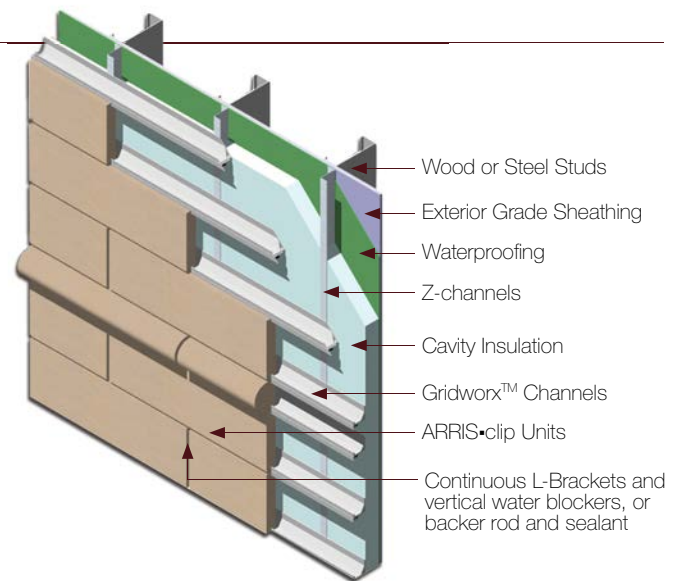
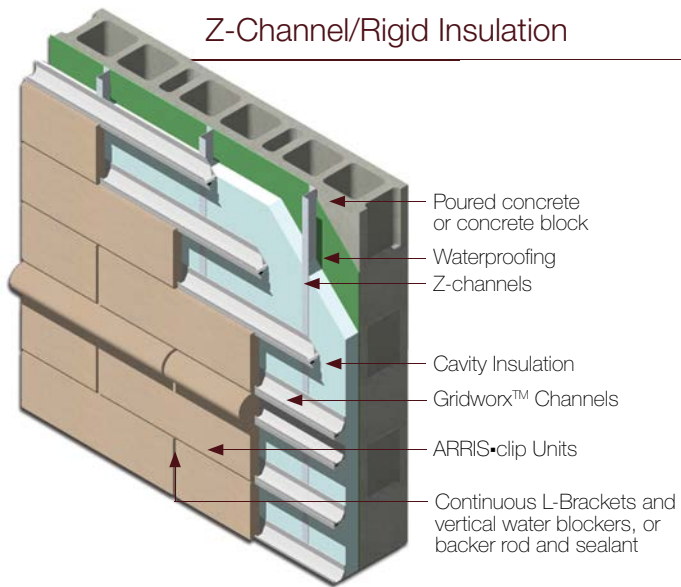
Mirabella Senior Living Condos
Portland, OR
Ankrom Moisan Associated Architects
ARRIS-clip Renaissance® Units

ARRIS•clip Installation

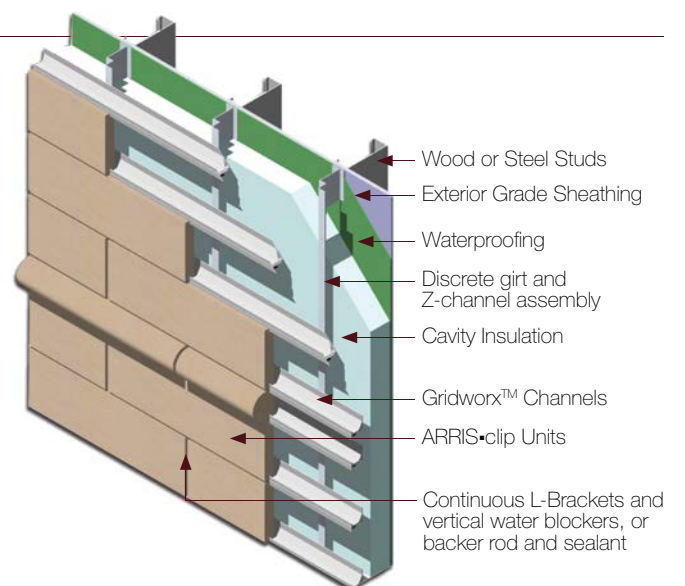
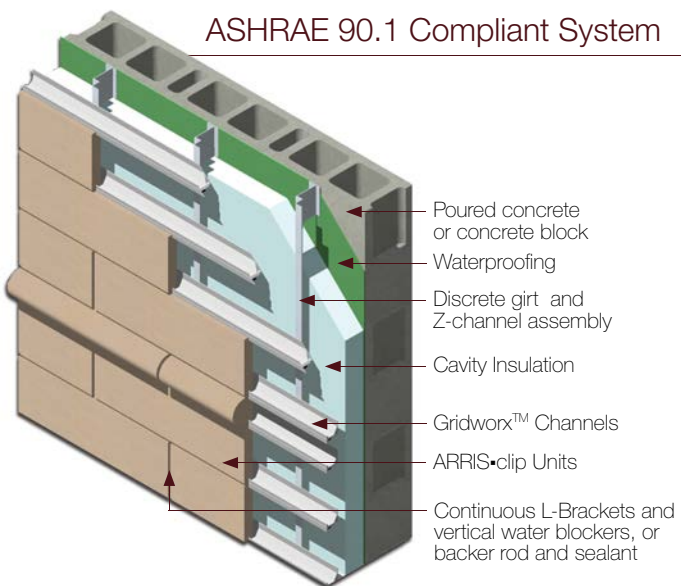
Standard Clip



Z-Channel/Rigid Insulation



ASHRAE 90.1 Compliant System





Rainscreen Veneers

Family Health Center
Fitchburg, MA
DiGiorgio Associates
ARRIS-clip Renaissance® Units

ARRIS•clip Back Drained and Ventilated Sealed Rainscreens



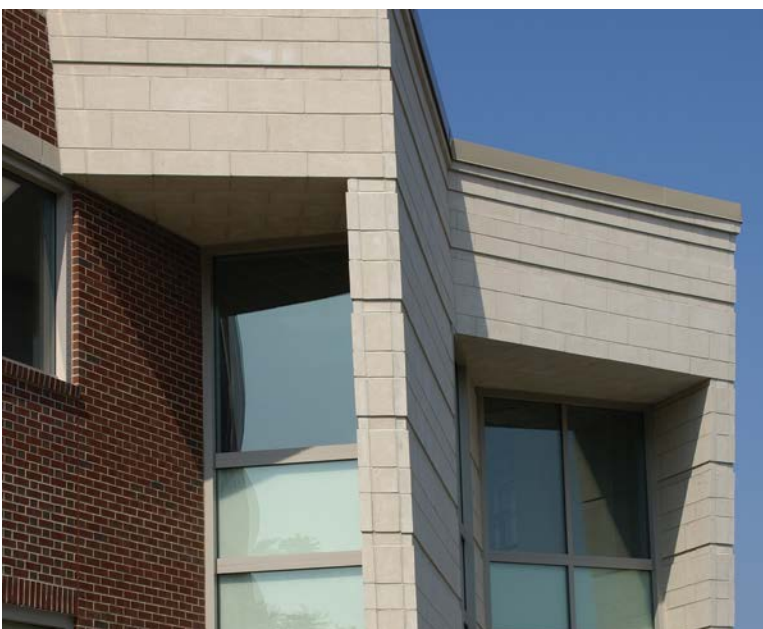
Curtain wall construction has been a mainstay in the architectural community for many years with metal, glass, pre-cast and even quarried stone and terracotta materials being incorporated. ARRIS•clip Renaissance® Units provide a viable alternative and can offer significant cost savings over these competing systems.



ARRIS•clip Renaissance® units are suspended from the substrate on the continuous anodized aluminum Gridworx™ channels. An airspace is maintained behind the supported stone units and drainage holes in the channels allow for drainage and drying of any moisture that does penetrate. This creates a back drained and ventilated rainscreen. The design and installation of ARRIS•clip units in this rainscreen wall system is easily understood by architects, installers, and general contractors alike as the system utilizes and builds on current construction principles and practices.

Distinct looks can be achieved with the selection between two optional joint systems, SEALED or OPEN rainscreens.

With a SEALED BACK DRAINED AND VENTILATED RAINSCREEN application a silicone sealant fills and seals the joints around each unit. The sealed system offers the flexibility of non-systematic installation as each unit is independent of the next unit on the wall. Joint sealants are available in many colors and smooth and sanded finishes are possible.

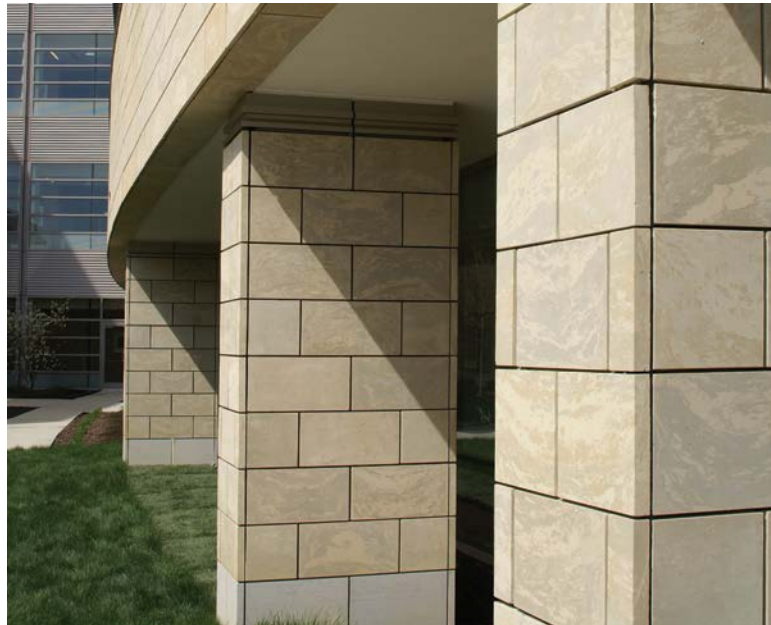


Options are available in back drained and ventilated systems with either open or sealed joints and simple drainage plane, insulated drainage plane and ASHRAE 90.1 compliant system installations.



Rainscreen Veneers

The University of Akron - Wayne Campus
Orville, OH
The Collaborative Inc.
ARRIS-clip Renaissance® Units



ARRIS•clip Back Drained and Ventilated Open Rainscreen

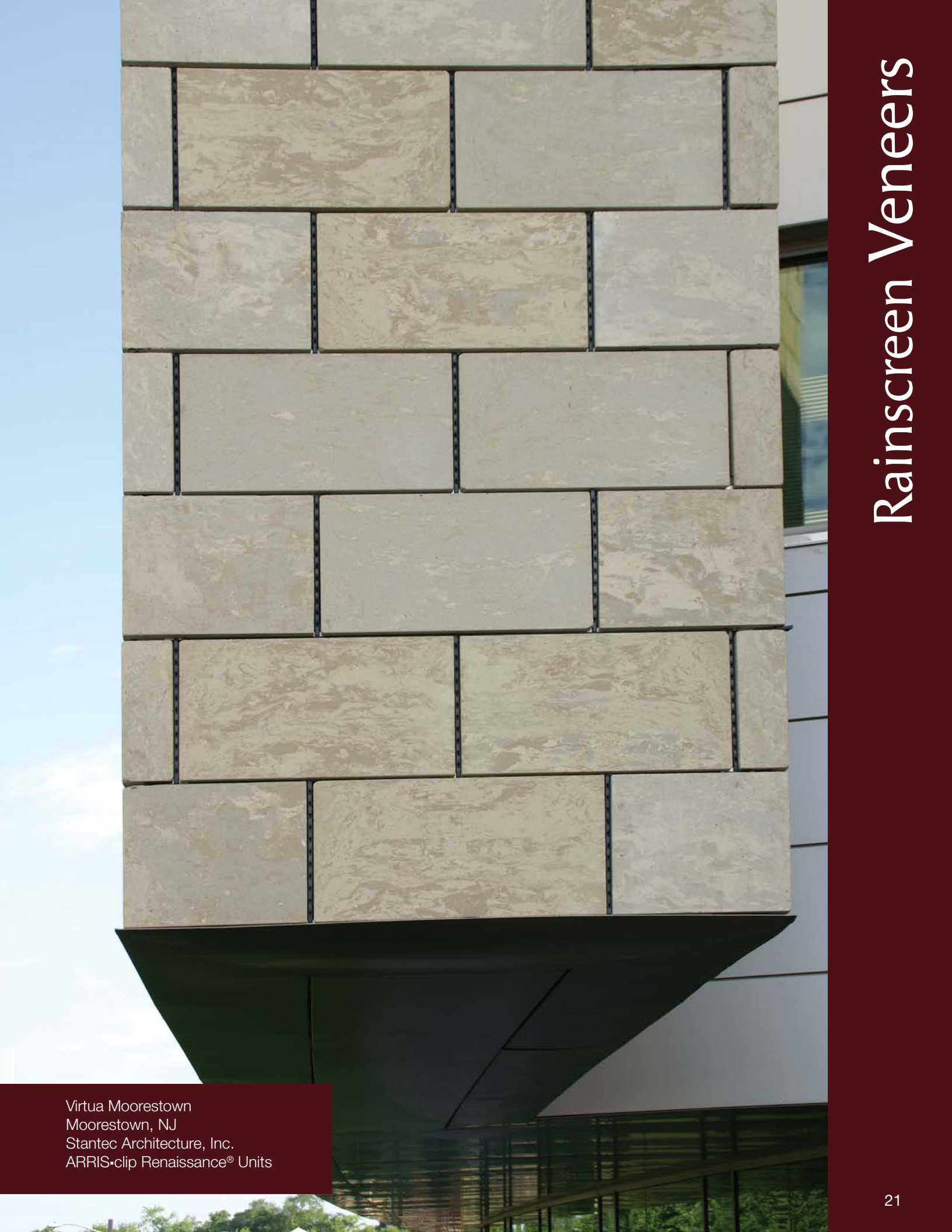
With all the versatility in design and construction of the sealed system, Arriscraft is pleased to be able to provide ARRIS•clip in a BACK DRAINED AND VENTILATED OPEN RAINSCREEN system. With this open rainscreen option, designers can use stone on their facades in a more modern way, taking stone from the traditional to the contemporary in look and feel.

The principle of rainscreen technology requires a three part assembly to prevent moisture penetration; the rainscreen veneer, airspace and waterproofing. With completely open joints, wind driven rain may be able to bypass the veneer and cavity making the waterproofing the only line of defense. The ARRIS•clip/ Gridworx™ OPEN RAINSCREEN system incorporates water deflection and drainage as additional measures against the infiltration of wind driven moisture while maintaining the open joint look.

This system uses the same channels as the sealed rainscreen but uses a modified and colored anodized L-bracket connection that is the full length of each unit giving the look of an open horizontal joint. Likewise, colored 'water blockers' are inserted in the vertical joints between units. These also serve to maintain the spacing between units, allow venting, aid in pressure equilibrium and deflect water. This same system also protects the air/moisture barrier from exposure, unlike truly open systems.

Unlike other back drained and ventilated open rainscreen systems such as terra cotta where there are significant limitations to the bond pattern and coursing options, the ARRIS•clip OPEN RAINSCREEN system allows for bond patterns and coursing options such as half-bond, third-bond, quarter-bond and stack bond as well as soldier coursing.

Options are available in back drained and ventilated systems with either open or sealed joints and simple drainage plane, insulated drainage plane and ASHRAE 90.1 compliant system installations.



Rainscreen Veneers

Virtua Moorestown
Moorestown, NJ
Stantec Architecture, Inc.
ARRIS-clip Renaissance® Units

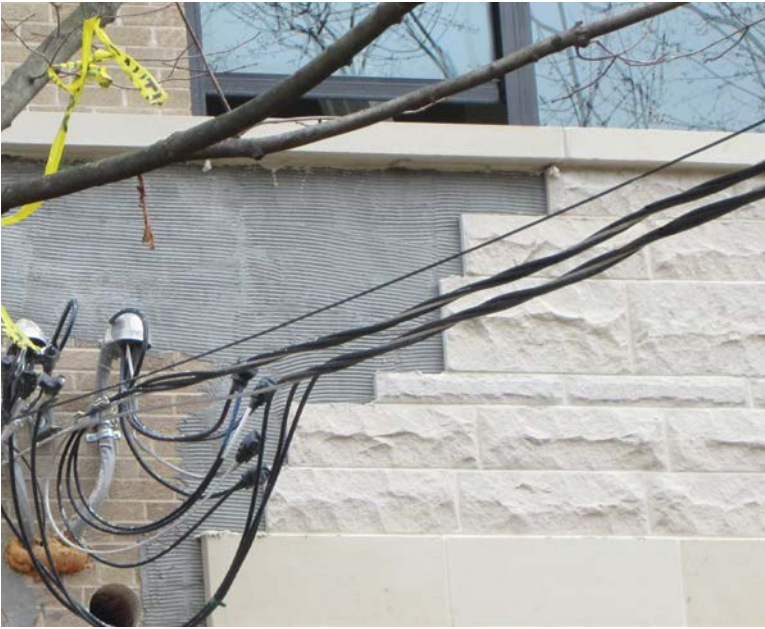
Virtua Moorestown
Moorestown, NJ
Stantec Architecture, Inc.
ARRIS-clip Renaissance® Units
and Old Country Building Stone





Rainscreen Veneers

Thin-Clad Versatility



ARRIS•clip, ARRIS•tile and ARRIS•stack do not require a ledge to support the stone veneer units. Overall, these systems are thinner and lighter than traditional brick or stone masonry veneer. ARRIS•clip can also be installed during the winter months without the need for tarps, salamanders and in some cases scaffolding.

ARRIS•clip Renaissance® Units provide an ideal solution for various construction challenges.

- Special details such as stone soffits, barrel vaults, battered/sloping walls, gable ends and building cantilevers are readily achieved with the use of an ARRIS•clip wall system
- ARRIS•clip, ARRIS•tile and ARRIS•stack Units are the ideal solution for retrofitting existing walls. Building owners looking to attract new tenants, buyers and customers to their existing facilities can consider enhancing their building's curb appeal with the use of these materials.

A thin-clad wall system constructed of ARRIS•clip, ARRIS•tile and ARRIS•stack:

- addresses limited lot lines & site space restrictions
- is lighter for use on existing structural elements
- does not require a brick ledge for support
- facilitates all-weather construction, and
- provides an attractive, durable façade.

After



Thin Veneer Versatility

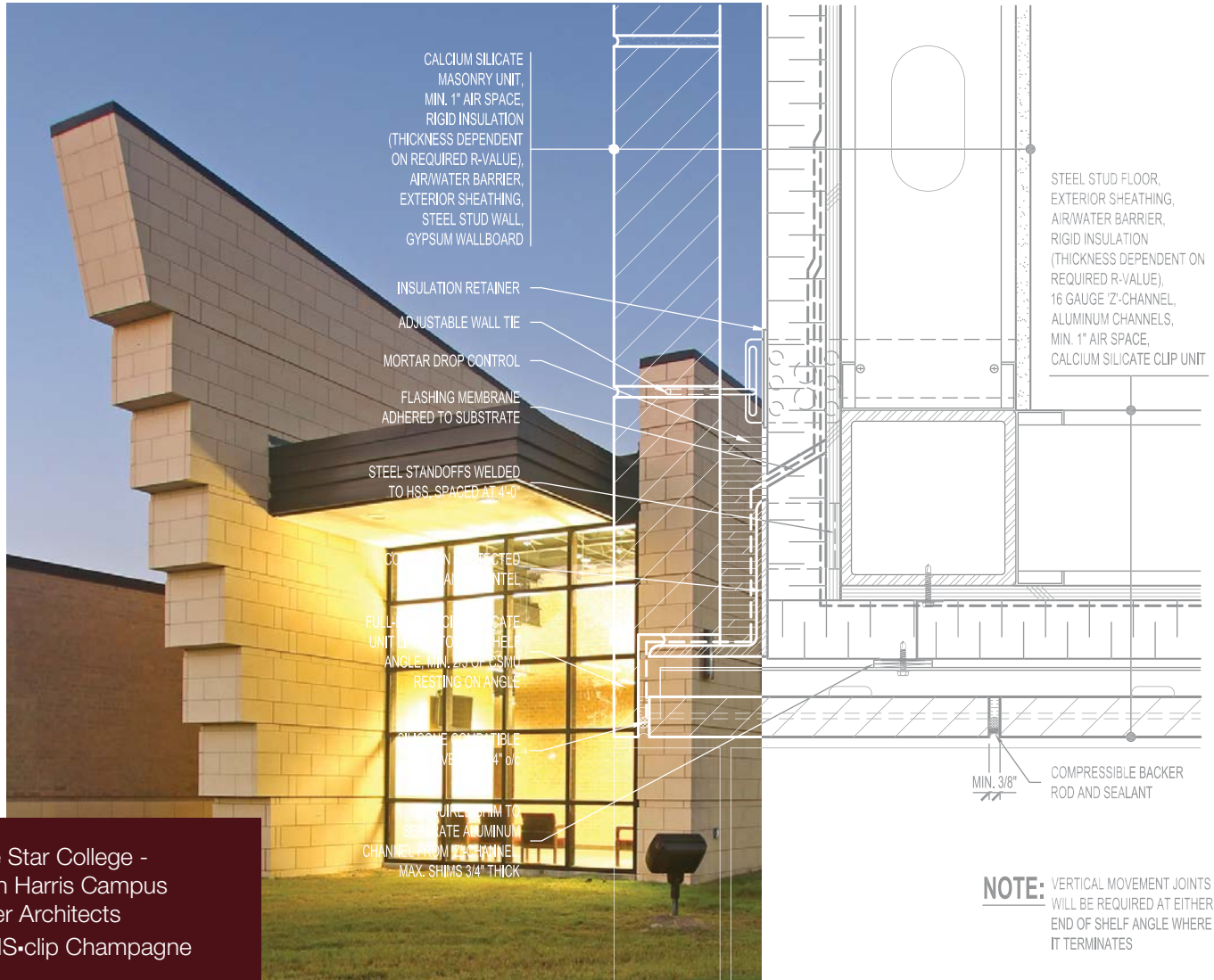
Before



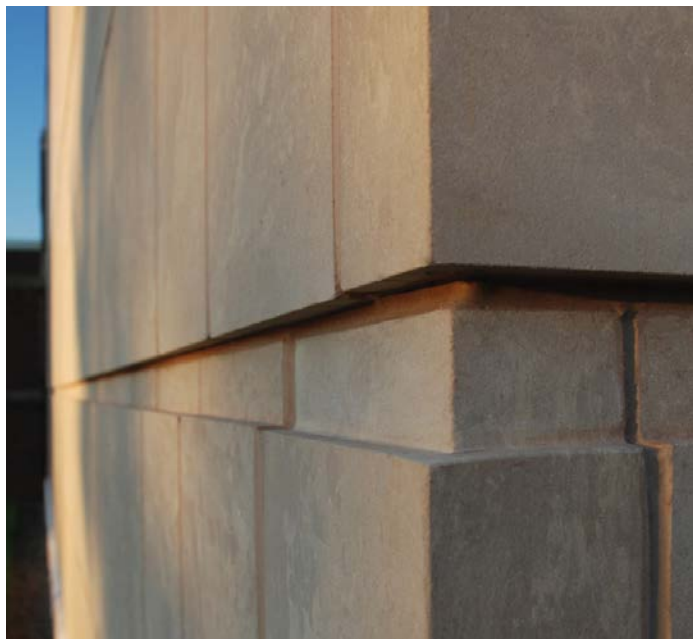
P&S Office Building
North Chelmsford, MA
Design/Build by P&S Construction
ARRIS-clip exterior, ARRIS-tile interior

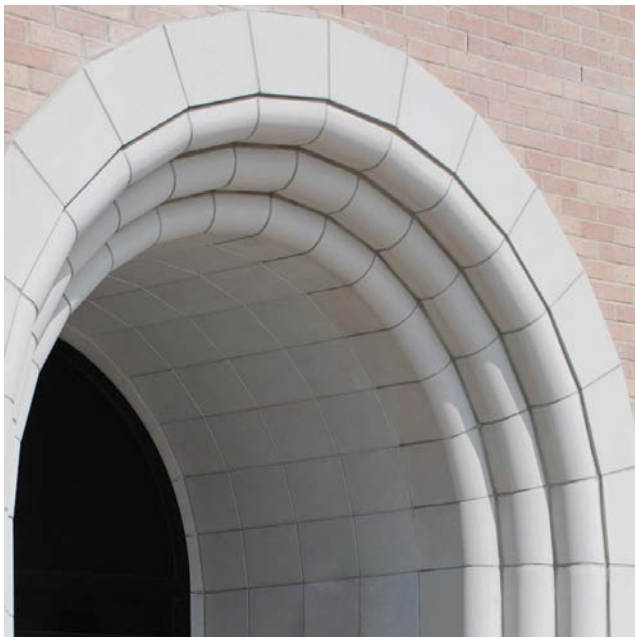
Features and Profiles

Discover the incomparable design flexibility of ARRIS-clip, ARRIS-tile and ARRIS-stack units. Our technical services team will help ensure that your design vision is realized.



Lone Star College -
North Harris Campus
Joiner Architects
ARRIS-clip Champagne







Arriscraft 
Building Stone · Brick · Limestone

Mountain Point Medical Center
Salt Lake City, Utah
ESA Architects
ARRIS.clip Sunset, ASHRAE 90.1
compliant system installation

Arriscraft Head Office
T: 1.800.265.8123

U.S. Office
T: 1.888.910.7775

solutions@arriscraft.com
www.arriscraft.com


General Shale