

MASON'S TIP # 8

Quick Install: Arriscraft Sill vs. Rowlock Brick

An Arriscraft sill is a simple and cost-effective way to accent any window, while effectively directing moisture away from the window areas.

ARRISCRAFT SILL



1. Apply mortar



2. Insert Sill; repeat as required depending on window size (2 sills for this example.)

Tip: Lap sill beyond jamb line a min. 4"



3. After final sill is in place, brush excess mortar from the surfaces utilizing uncoated steel and soft fibre brush.



4. This example was completed in 1/3 of the time required to build a rowlock sill.

Tip: Rake out joint the next day, repaint if necessary.

ROWLOCK CONSTRUCTION



Traditional rowlock installation requires multiple steps:

1. Apply Mortar



2. Cut, place and position multiple bricks.



3. Repeat steps 1 and 2 until sill is complete (15 times for this example.)



4. Repeatedly check level, and re-position where required;



5. Tool multiple mortar joints (13 this example), and then brush excess mortar from bricks.



6. This example took 3 times longer to complete than the Arriscraft sill

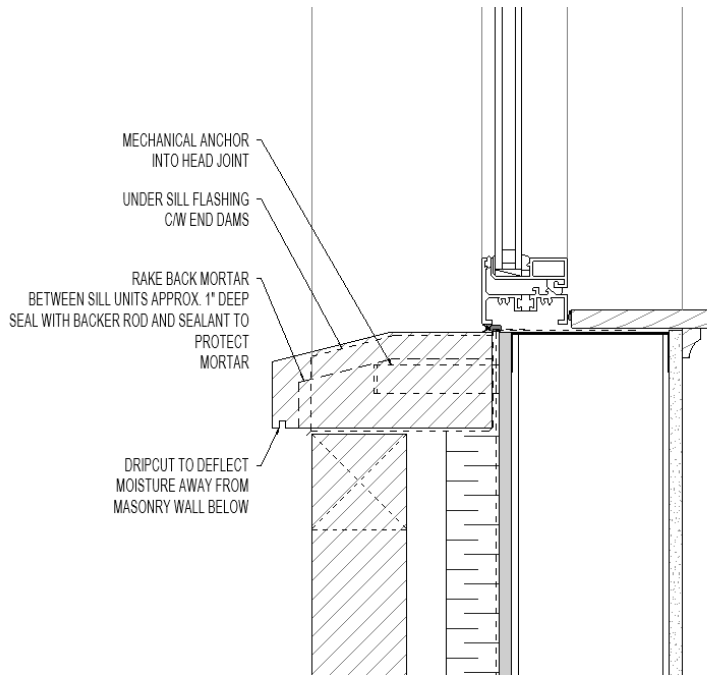
Questions? Call 1-800-265-8123
and ask to speak with our Technical Services Department.

 **Arriscraft**
Building Stone · Brick · Limestone

MASON'S TIP # 8

Quick Install: Arriscraft Sill vs. Rowlock Brick

Arriscraft Window Sill



Arriscraft Sill Add Benefits

- Enhanced curb appeal of home
- Reduced builder call backs for water problems
- Speed of installation is greatly increased for mason
- Fewer mortar joints mean reduced possibility of leaks
- Reduced efflorescence in brick under window

The moisture shedding characteristics of a well-designed and constructed window sill provide enhanced protection to your home against the elements.

Questions? Call 1-800-265-8123
and ask to speak with our Technical Services Department.

MASON'S TIP # 8

Quick Install: Arriscraft Sill vs. Rowlock Brick

Mechanical Anchor Installation



Obtain a mechanical anchor to anchor window sill units back to the structural back-up.

One commonly used mechanical anchor is the “split-tail anchor” as seen in photo.



Site-cut slot openings into the bed of the window sill units to insert the tails on the split-tail anchor.



Now you can fasten anchor into the structural back up. Window sill units are now ready to be installed.

Questions? Call 1-800-265-8123
and ask to speak with our Technical Services Department.