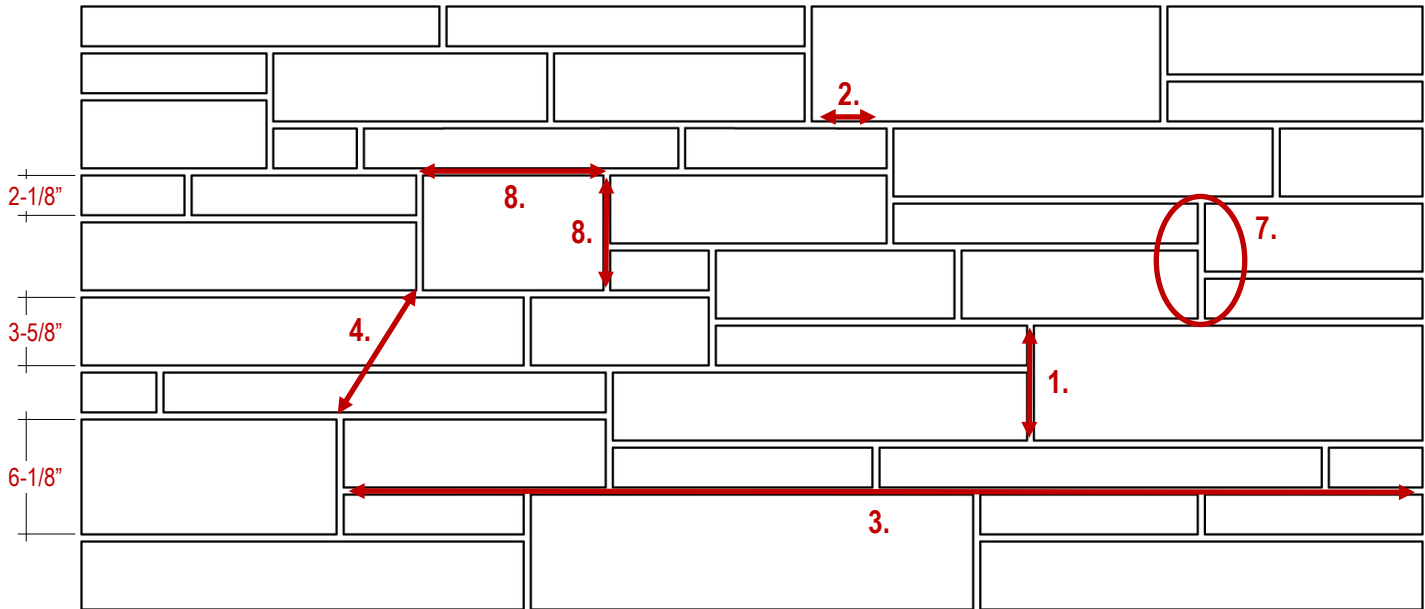


Coastal Thin Building Stone

Typical Elevation • 30:55:15 Bond • 3/8" Joints • Split and/or Sawn Textures • Random Lengths



Guidelines for Installation:

1. A 2-1/8" and 3-5/8" unit combination will bond with one 6-1/8" unit, with a joint.
2. Maintain a minimum 4" between vertical joints.
3. Maintain a maximum 4-5 foot horizontal joint length.
4. To maintain the standard ratio of sizes in the wall, 6-1/8" units should be placed approximately 1-1/2 to 3 feet apart. 6-1/8" units should not touch each other.
5. Use hard plastic shims to maintain joint width and keep installation level while bonding mortar cures. Arriscraft can provide 1/16", 1/8", 1/4", and 3/8" hard plastic shims to assist with installation. Pieces of wood, cardboard, jobsite debris, etc. should not be used for shimming as they can shift or swell when wet, which can impact the final appearance.
6. Cut full-length units to shorter lengths. Randomness in the lengths creates randomness in the pattern. Installing all full-length units will create the need to stack units or create boxes which should be avoided as it creates noticeable aesthetic structure where there shouldn't be any.
7. Cut and trim units as required as units are being installed to ensure units bond together. The use of a dust mask is recommended.
8. When cutting units, unit length should never be less than the height of the unit.

Avoid:

- Stepping or stringing together more than 2-3 units of the same height.
- Creating box patterns in the wall.
- Stack bonding.
- Units that are shorter than they are tall.

CODE	SIZE	PIECE LENGTH
COA21	2-1/8"	Fragmented lengths up to 23-5/8"
COA35	3-5/8"	Fragmented lengths up to 23-5/8"
COA62	6-2/8"	Fragmented lengths up to 23-5/8"

One Piece is based on a 23-5/8" length and may be comprised of 2 or more individual stones.

General Installation Guidelines

- Refer to the Arriscraft [Thin-Clad Installation Guide](#) that is applicable to your installation type for selection of other materials such as mortar and waterproofing. Installation Guides are available for both exterior and interior installations.
- Mix polymer fortified mortar powder with clean, potable water and per the mortar manufacturer's recommendations. Mix powder and water with a variable speed drill (do not use a high speed drill) to a smooth, trowelable consistency. Allow mortar to slake for 5—10 minutes then remix the mortar without adding more water or powder. During use, occasionally stir/ whip mortar to keep the mix fluffy. Do not temper the mortar with water after initial mixing.
- **Start by installing the corner units first. Ensure to stagger both faces of the corner units back and forth so that the faces do not align with the faces of the units above and below to ensure shadow lines continue at the corners. Bonding mortar thickness may have to be varied to create the variation in the plane of the faces.**
- Ensure 100% coverage with mortar on the substrate and backs of the units so no voids exist within the mortar. Periodically check for 100% mortar coverage by removing eight stone units from the wall per bag of mortar used. Reinstall unit by pushing it back on the wall where it was installed.
- Scrape excess mortar from tops of the installed units to ensure the installation remains clean as it is being installed.
- We recommend the use of a v-notch trowel to apply thinset to the substrate to butter the wall. This will prevent excess mortar from squeezing out between units. Fully cover backs of units with mortar as well prior to placing units on the wall.
- Use shims to ensure the install is level and maintains the bond. Use a 4'-0" level periodically to check that the installation is level and relatively plumb.
- After installation of the units and the mortar has started to cure, any excess mortar and dust should be brushed from the masonry surface using a bristle brush. Avoid rubbing or pressing the mortar into the units.
- Shipped material includes a percentage of shorter random length/fragmented units which can be used by the installer around openings such as windows and doors, to create the random ashlar bond pattern, or in internal corners where two walls meet. Some units may need to be field trimmed or guillotine split to ensure units fit snugly together.
- Coastal Thin Building Stone is installed with a mortar joint between units. Recommended joint profiles include concave or raked tooled joints.
- Split and sawn face textures, as well as various colors, are available. Both textures can be mixed together on site if desired to create a blend of styles.
- Refer to additional guidelines in the Arriscraft [Care, Cleaning, and Maintenance](#) document.



CONCAVE



RAKED