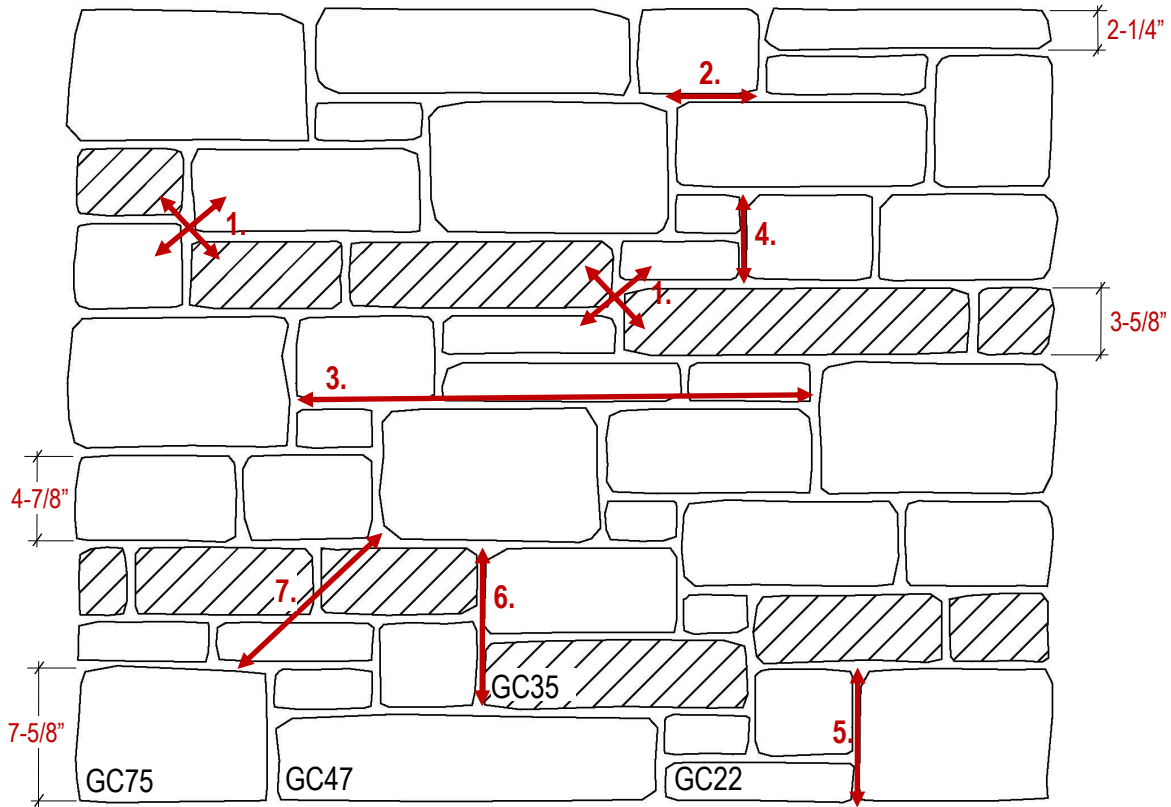


# 4-Unit Georgia Citadel® Building Stone

Typical Elevation • 20:20:40:20 Bond • 1/2" Mortar Joints



## Guidelines for Installation:

1. GC35 units should form a staggered bonding line by crossing with GC22s and GC47s.
2. Maintain a minimum 4" lap between vertical joints.
3. Maintain a 3—4 foot horizontal joint length.
4. Two GC22s will bond with one GC47.
5. A GC22/GC47 combination will bond with one GC75.
6. Maximum vertical joint is formed with crossing a GC47 with a GC35 (= 9"), and is the height of the tallest unit.
7. To maintain the standard ratio of sizes in the wall, GC75 should be placed approximately 1— 1-1/2 feet apart. GC75 units should not touch each other.

## Avoid:

1. Stepping or stringing together more than 2-3 units of the same height.
2. Creating box patterns in the wall.

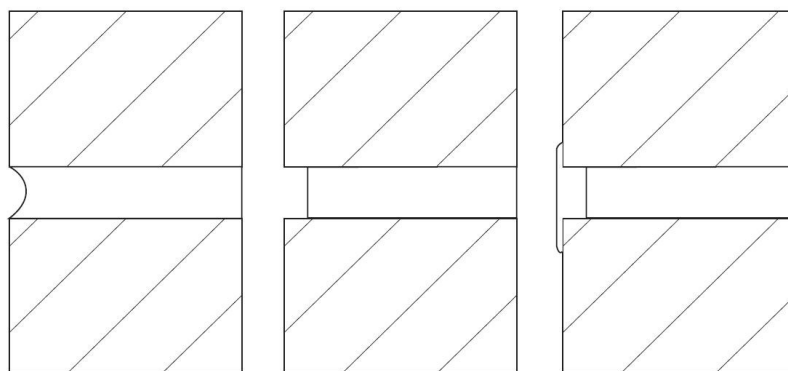
Size	Pieces* per 32 sq.ft.	Nominal Length of one piece
GC22	13	24"
GC35	9	24"
GC47	15	24"
GC75	4	24"

\*One piece is based on a 23-5/8" length and may be comprised of 2 or more individual stones.

# General Installation Guidelines

- Arriscraft recommends the use of a Portland cement-lime mortar, proportioned to a 1:1:6 ratio.
- Masonry units should be laid with full head and bed joints except where they are used for weep holes or ventilation.
- Bevel mortar from rear face to prevent protrusion into cavity.
- Prevent excessive mortar droppings by cutting off excess mortar with trowel as the units are laid.
- Butter head joints of unit being placed in wall.
- Place unit to tightly compress mortar.
- Do not re-adjust unit once it has been set in place.
- Tool joints when mortar is thumbprint hard. This timing will depend on the mortar properties and weather conditions.
- Tool joints to a tightly compressed surface to achieve the most weather resistance. Concave tooled joints provide the best resistance to moisture penetration.
- After tooling, any excess mortar and dust should be brushed from the masonry surface using a soft bristle brush. Avoid rubbing or pressing the mortar into the units.
- Refer to additional guidelines on the BASIC CARE sheet.

## Mortar Joint Profiles:



Concave

Recessed

bagged

March 2022